

Project Overview

As part of our commitment to provide safe, reliable service to all our customers, Rochester Gas and Electric Corporation (RG&E), in conjunction with our parent company – Avangrid, is updating the delivery system in our service areas. These upgrades comply with new electric distribution reliability requirements.

While making investments to meet the community's growing energy demands, we are working closely with our neighbors to ensure that all improvements are performed with minimal disruption to the environment and the communities we serve.

Project Information Line: 1.888.553.5411

Refer to: Station 56, Circuit 5180 Resiliency

Email: outreach@rge.com

Website: RG&E > Reliable Service

Project Purpose and Need

The purpose of this project is to strengthen the electrical grid through targeted upgrades that improve reliability, efficiency, and readiness for future demand, ensuring more consistent service across the RG&E region.

The *Hardening & Topology Resiliency Program* will directly impact the Monroe Ave, Westfall Road, Winton Road, and French Road areas, which were selected based on reliability performance data. Planned upgrades—including automated reclosers and other resiliency improvements—will help reduce load pressures, minimize energy losses, limit the scope and duration of outages, and support faster power restoration when interruptions occur.

Upgrade Project Scope Includes

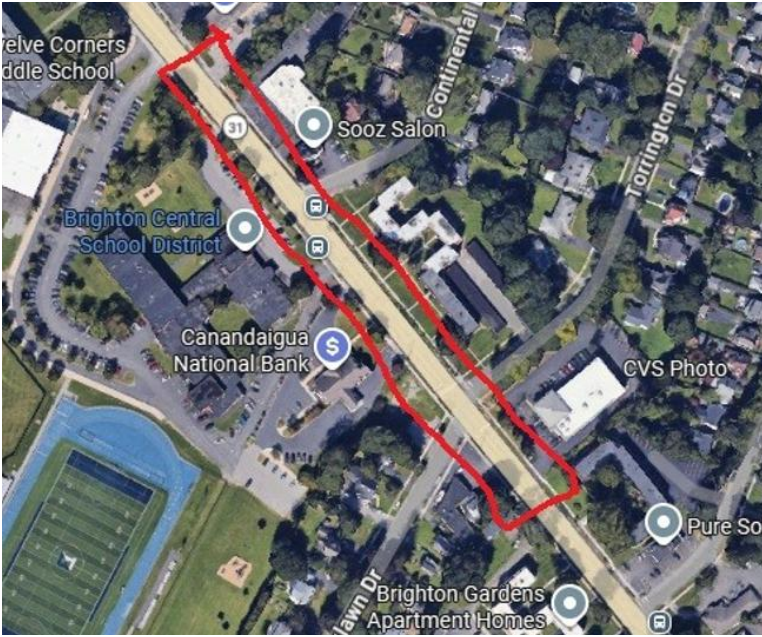
- Replacing sections of overhead and underground power lines.
- Upgrading older switches and installing new automated devices, including reclosers, to help reduce outage time.
- Adding TripSaver equipment to isolate issues more quickly.
- Balancing customer load across nearby circuits for better performance.
- Strengthening connections between circuits so power can be rerouted when needed.
- Installing capacitor banks to support voltage and overall grid efficiency.
- Hardening the system by using tree-wire where needed, replacing poles, and relocating lines closer to roads where applicable.
- Performing enhanced vegetation management, including ground-to-sky tree clearing, to help prevent outages caused by falling limbs or trees.

Regional Benefits

- These upgrades will improve the reliability and resiliency of the entire distribution system, ensuring that the safe and reliable distribution of power is maintained.
- The modern digital equipment will make it easier to restore power and reduce restoration time in the event there is a service interruption.

What to Expect During Construction

- Increased construction vehicles in the work areas, including daily traffic as crews travel between material staging area and work areas.
- Traffic signs will be provided to indicate temporary detour and pedestrian flow.
- Ensure public safety by avoiding project work zones and adhering to posted signage during construction work hours.



Planned work zone on Monroe Avenue.

Project Location

Municipalities: City of Rochester

County Impacted: Monroe

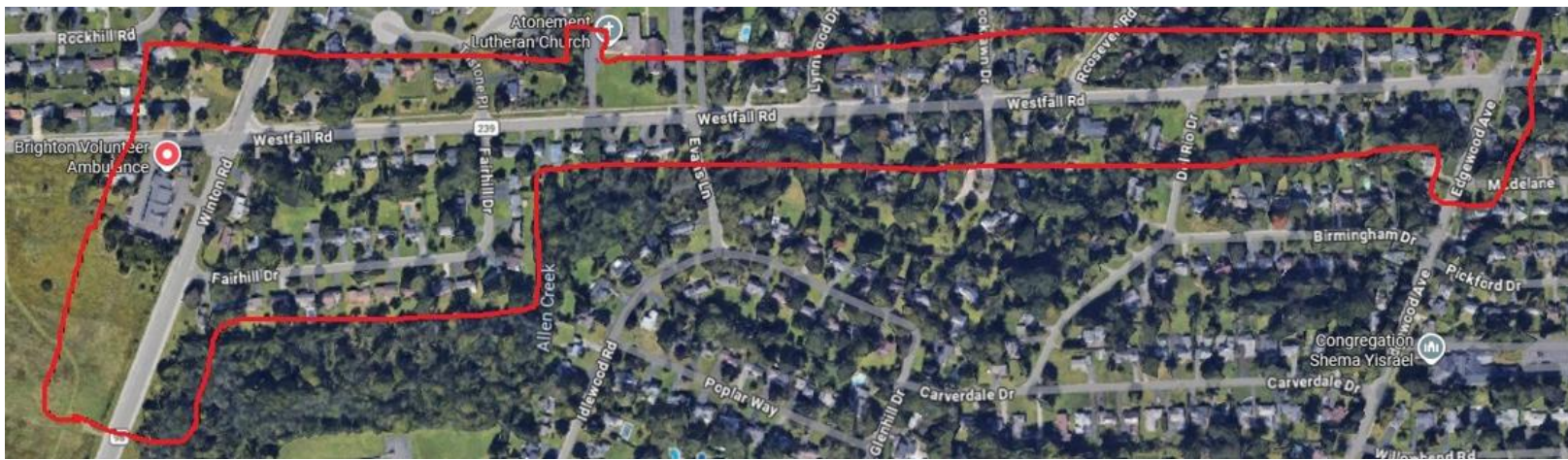
Permitting Required: Local

Estimated Timetable *(subject to change)*

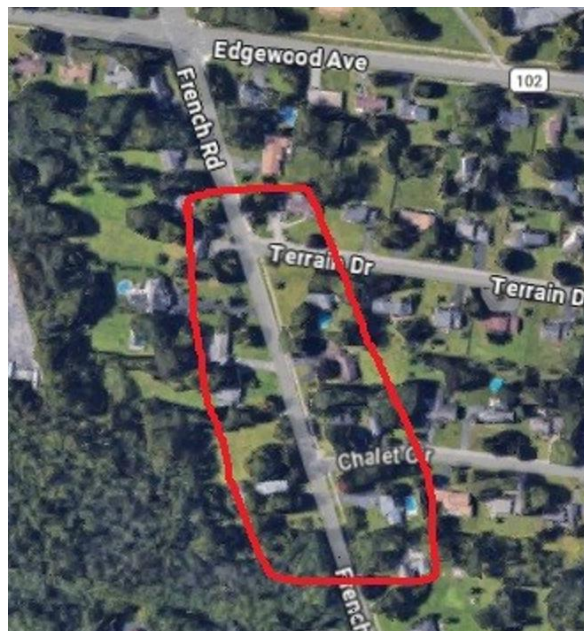
Project Start: Q2 2026

Project Completion: Q4 2026

In Service Date: Q4 2026



Planned work zone at Westfall Rd and Winton Rd.



Planned work zone on French Rd.