



EnergyLines

Save paper — sign up for eBill and view this newsletter online, too!

Our payment options are a picnic

Our **FREE** and convenient payment options make it easy to pay your bill without lifting a finger, giving you more time to enjoy your favorite summer activities.

By signing up for **eBill**, you can check your inbox, not your mailbox, view, pay and store your bills online from anywhere. We'll send you a notification when you have a new bill available and a reminder when it's due. You can also review 13 months of your previous bills online and print only what you need.

Add **AutoPay** and paying your bill is easy. Your payment will be made securely, automatically and on time each month – you don't have to do a thing!



Not signed up for our FREE payment options?

We can help! You'll need your account number from the bill you probably have in your hand, then **simply scan the QR code on this page** with your cell phone and be directed instantly to our login page.

Sign up for one or both of our payment options today at **rge.com**, so you can stay focused on summer fun!

Avangrid receives prestigious honor

Avangrid, the parent company of RG&E, was recently named one of the World's Most Ethical Companies for 2019 by the Ethisphere Institute.

This recognition demonstrates our commitment to the highest standards of safety, ethics and corporate governance with a focus on customers, colleagues, regulators and shareholders as well as our impact on the environment and the communities we serve.



We are proud to be one of the 128 honorees spanning 21 countries and 50 industries receiving this honor.



Hats off to our lineworkers!

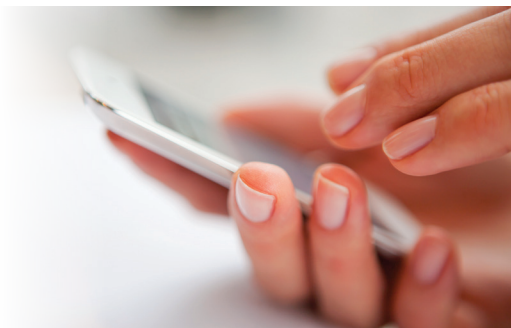
July 10 is Lineman Appreciation Day. Their dedication to keeping the electricity delivery system in tip-top shape is commendable and we appreciate their unending commitment to bring safe, reliable, high-quality power to our customers every day.

Get Outage Alerts specific to you

If summer storms cause outages and you're signed up for **Outage Alerts**, you'll be kept informed using the phone number associated with your account.

So, if your phone number needs updating, visit **rge.com** and login to your account to make the change. Then, no matter where you are, you'll still receive our **Outage Alerts**.

Not registered for **Outage Alerts** yet? Sign up today at **rge.com** and get the information you need if the power goes out.



We're committed to your safety



Line markers, such as the one above, indicate a buried natural gas pipeline's general location.

We work with industry groups to continually enhance natural gas pipeline safety. We also work with emergency responders, and state and local agencies, to prevent and prepare for emergencies through training and periodic drills.

Since natural gas pipelines are underground, line markers are sometimes used to indicate their approximate location. Markers only indicate a pipeline's general location and should not be relied upon to indicate the exact position.

Because many lines are not marked, it is critical that you contact **Dig Safely New York** at **811** prior to any excavation.

As an added safety measure against excavation damage, you can request that we install an Excess Flow Valve. For more information on installation requirements and costs, visit **rge.com**.

Make your summer a smart summer

Your Energy Savings Store, our online store, is loaded with instant rebates on products that can save energy and lower your energy bills. Our product lineup includes:

- Smart thermostats*
- LED lighting
- Connected home products
- Outdoor living products and more!

Our online store is always open and you can shop from the convenience of your lawn chair. Visit **yourenergysavingsstore.com** and start saving today!

*If you're considering purchasing a smart thermostat, be sure to refer to the enclosed **Smart Savings Rewards** program bill insert to see how you could qualify for an additional \$45 incentive and \$5 bill credits this summer.



Safety requires clear access to your meter



To ensure your safety, the safety of others, and properly maintain your meter, it's important to keep a clear path to your meter. Here are some summer safety tips to consider:

- Trim overgrown trees or bushes and remove piles of leaves and debris.
- Be cautious of permanent obstructions that could prevent clear access to your meter.
- Carefully remove bees' nests.
- Be aware of potential size and growth patterns of new landscape.

Remember... You can get a notice of your next scheduled meter read date – or submit your meter reading to us – when you sign up for our free **Meter Read Reminder Alerts** Service at **rge.com**!