



EnergyLines

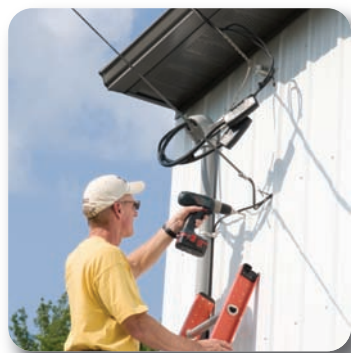
Go paper-free – rge.com/online

Stay Safe When Working Outdoors

Whether you're a contractor or a homeowner doing an outdoor project, having underground utilities marked is essential to protect yourself from injury and prevent damage to underground utility lines. Having underground utilities marked is easy – simply call **811** at least two working days (not including the day you call) but not more than 10 working days before you plan to start your project. (If you choose, you can call *Dig Safely New York* directly at **1.800.962.7962**.)



**Know what's below.
Call before you dig.**



Look Up...Look Out!

When working outside, remember to watch overhead. Aluminum siding, gutters, ladders and other materials can conduct electricity. If anything touches an overhead power line, the results could be deadly. For more information, visit rge.com, click on "Usage and Safety" and then on "Dig Safely and Look Up."

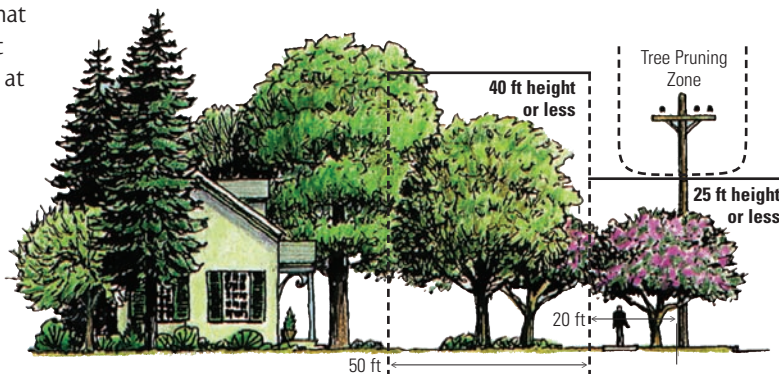


Remember:

- Water and electricity NEVER mix. Keep power tools and extension cords away from water, including rain, wet ground, swimming pools, sprinklers and garden hoses.
- Have a licensed electrician add weatherproof covers and GFCIs (ground-fault circuit interrupters) to outdoor electrical outlets to protect against electrical shock.
- Leave cutting and pruning of trees near power lines to professionals. A tree or limb that comes in contact with a power line could be deadly.

Plant the Right Tree

Trees are valuable additions to our neighborhoods. However, trees that come in contact with power lines are a leading cause of power interruptions. If you're thinking about planting a tree near power lines, check with the Arbor Day Foundation for **low-growing varieties** that will add beauty to your property without interfering with power lines. Learn more at arborday.org or call **1.888.448.7337**.



- | | |
|-------------------------------|------------------------------|
| Medium trees, such as: | Small trees, such as: |
| • Washington Hawthorn | • Redbud • Dogwood |
| • Golden Raintree | • Crabapple |



Join us in celebrating Earth Day, Monday, April 22.

Attention College Students and Moving or Seasonal Customers

If you need your RG&E service turned on or off, don't wait – we can schedule your request months in advance! Visit us anytime online at rge.com or contact us at **1.800.743.2110**, 7 a.m. to 7 p.m., Monday through Friday.

Please let us know as far in advance as possible – we need **at least** 24 hours' notice. If the meter is inside, you will need to be present or make access arrangements with us to have service turned on or off.

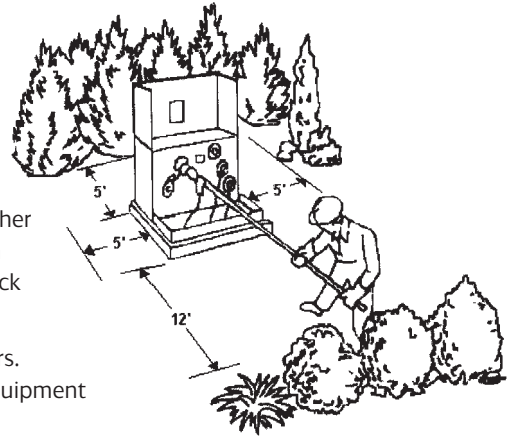


Don't Plant or Place Items Near Pad-Mounted Transformers

Some housing developments have underground electricity service with pad-mounted transformers, green metal boxes mounted on fiberglass or concrete foundations.

As part of our continuing effort to provide safe, reliable service, we routinely inspect pad-mounted transformers. At times we need to access them to maintain equipment or restore service. To make this work possible, we need to be sure there are no trees, plants or other obstructions within 12 feet of the front of the transformer and within five feet of the other three sides. (The front is the side with the padlock and/or warning sticker.)

- Please don't plant or place items around pad-mounted transformers. The risk of serious injury when digging near energized electrical equipment is significant.
- If there are plants or other obstructions, do not attempt to remove them. Contact RG&E or a qualified contractor.



Clearances needed to work on pad-mounted transformers.

Environmental Update

- RG&E is required by the New York State Public Service Commission (PSC) to publish this information twice a year with the most recent data provided by the PSC, in this case for calendar year 2010.
- **If you receive your electricity supply from RG&E**, your environmental disclosure information is provided here. It is also available at rge.com, click on "Giving Back" and then on "In the Environment."
- **If you receive your electricity supply from a supplier other than RG&E and your supplier's charges are included in your RG&E bill**, your supplier's environmental disclosure will be provided in a separate bill insert that may not be at the same time as when RG&E's disclosure information is provided.
- **If you buy your electricity from a supplier other than RG&E, and are billed directly by your supplier**, you should receive environmental disclosure information from your supplier.
- For more information on environmental disclosure, contact the PSC at **1.888.Ask.PSC1** (1.888.275.7721) or visit dps.ny.gov.



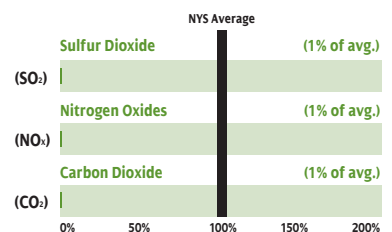
Fuel Sources Used to Generate Your Electricity

- January 2010 through December 2010
- Actual total may vary slightly from 100% due to rounding

Biomass	Less than 1%
Coal	Less than 1%
Hydroelectric	11%
Natural Gas	Less than 1%
Nuclear	88%
Oil	Less than 1%
Solar	0%
Solid Waste	Less than 1%
Wind	Less than 1%
Total	100%

Air Emissions Relative to the New York State Average

- January 2010 through December 2010



RG&E's sources of electricity supply are cleaner than the New York State average.