



**RG&E**

An AVANGRID Company

# ACCELERATING TRANSFORMATION



RG&E, an AVANGRID company, operates more than 8,959 miles of electric distribution lines and more than 1,100 miles of electric transmission lines. It also operates more than 9,144 miles of natural gas distribution pipelines and 103 miles of gas transmission pipelines. Serving a nine-county region surrounding the City of Rochester, RG&E creates sustainable value for customers by providing reliable service and investing in innovative technologies to make the electric grid more resilient.



## Reliability

Investing in the safety and reliability of service to meet the needs of our customers



## Innovation

Harnessing the power of technology to transform the energy system



## Sustainability

Unlocking New York's clean energy economy to meet state policy goals

**1848**

Rochester Gas Light Company is formed (RG&E traces its roots to this company)

**1892**

Rochester Electric Light Company, Edison Electric Company and Rochester Gas Light Company join to form Rochester Gas and Electric Corporation

**1998**

Energy East formed

**2008**

Iberdrola, S.A. acquires Energy East

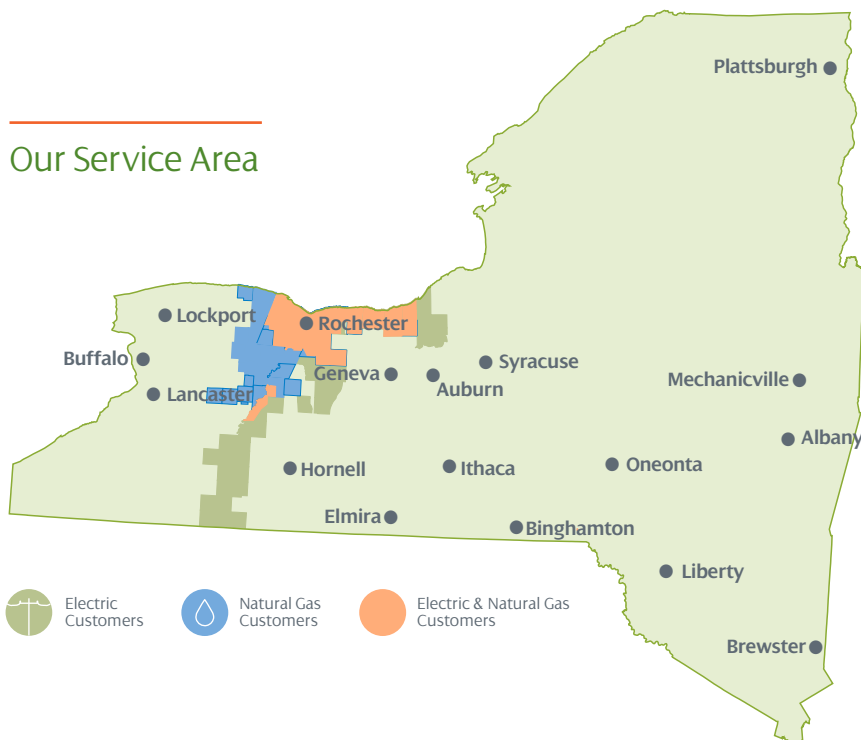
**2009**

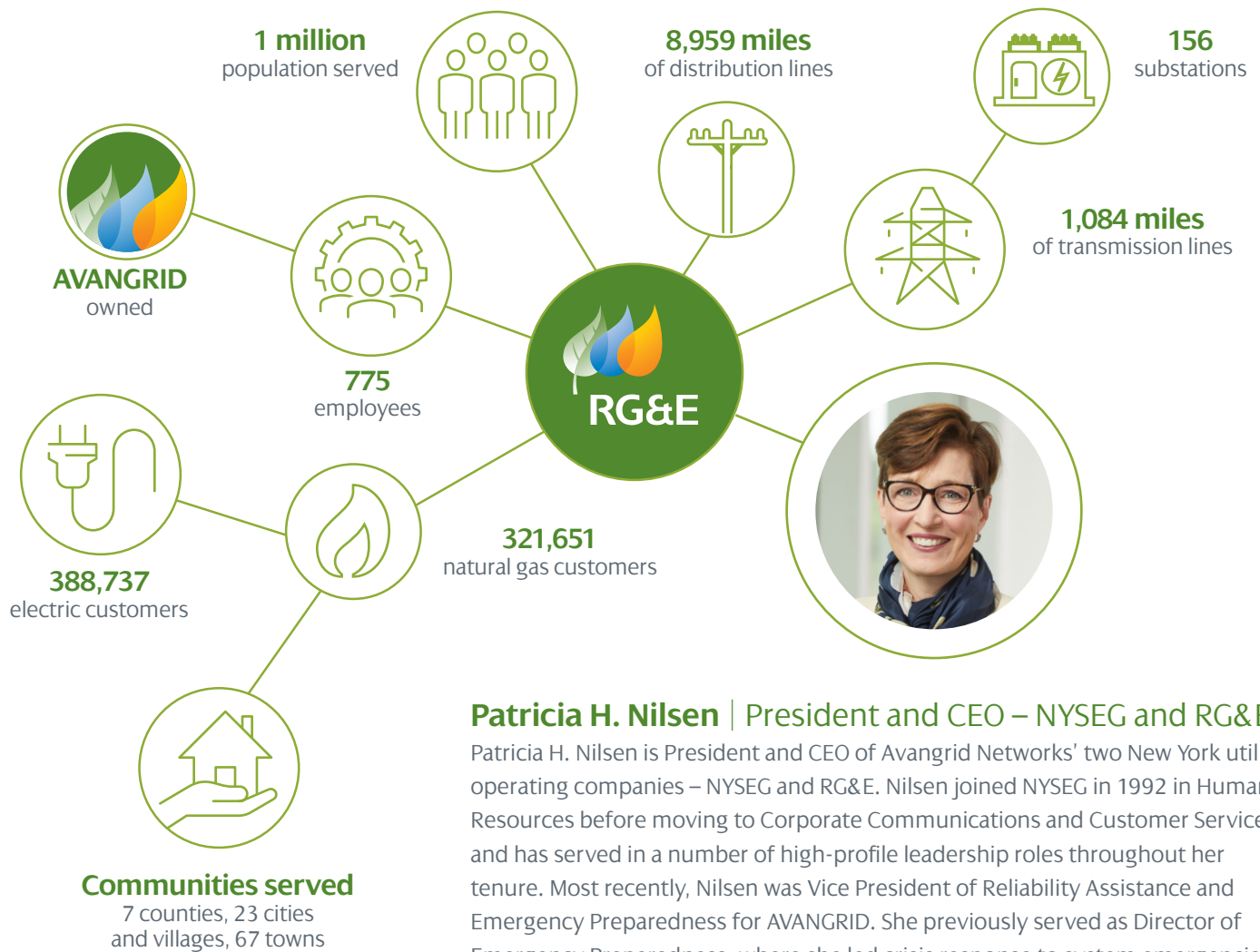
Energy East name changes to Iberdrola USA

**2015**

Iberdrola USA and UIL Holdings merge to form AVANGRID

## Our Service Area





### Patricia H. Nilsen | President and CEO – NYSEG and RG&E

Patricia H. Nilsen is President and CEO of Avangrid Networks' two New York utility operating companies – NYSEG and RG&E. Nilsen joined NYSEG in 1992 in Human Resources before moving to Corporate Communications and Customer Service, and has served in a number of high-profile leadership roles throughout her tenure. Most recently, Nilsen was Vice President of Reliability Assistance and Emergency Preparedness for AVANGRID. She previously served as Director of Emergency Preparedness, where she led crisis response to system emergencies across all eight of AVANGRID's electric and natural gas companies. Nilsen holds a master's degree in English from Syracuse University, a master's degree in adult education from Elmira College and a bachelor's degree in English and Fine Arts from Alfred University.

We are **working together** to deliver a more accessible **clean energy model** that promotes healthier, more **sustainable communities** every day.

Our purpose reflects our commitment to transforming how we serve our customers by prioritizing the well-being of people and the conservation of the planet. It is inspired by and built on our three core values:

**SUSTAINABLE:** We seek to be a model of inspiration for creating economic, social and environmental value in our communities, and we act positively to effect local development, generate employment and give back to the community.

**AGILE:** We act efficiently and with passion to drive innovation and continuous improvement at both the local and global level.

**COLLABORATIVE:** We work together toward a common purpose and mutual benefit while valuing each other and our differences.



To learn more, please visit [rge.com](http://rge.com)