

2025 Bulk Power Energy Storage Request for Proposals

APPENDIX E – Preferred Locations	2
Overview	2
Preferred NYSEG Locations	2
Location 1 – Hickling Substation Area - Elmira.....	2
Location 2 - Kiamesha Substation Area - Liberty.....	3
Location 3 – Green Street Substation Area - Auburn	4
Location 4 – Langdon Substation Area – Binghamton.....	5
Location 5 – Richfield Springs Substation Area – Oneonta	5
Preferred RG&E Locations.....	7
Location 1 – Station 48 Area	7
Location 2 – Station 168	8
Location 3 – Station 121	9
Location 4 – Station 7	10

2025 Bulk Power Energy Storage Request for Proposals

APPENDIX E – Preferred Locations

Overview

As part of the qualitative evaluation of Bidder proposals NYSEG and R&GE will evaluate the location of proposed projects. Both NYSEG and R&GE have identified preferred locations which are illustrated and described below. Please note the maps illustrate approximate boundaries and exact electrical connection to the load areas requires verification.

Preferred NYSEG Locations

NYSEG has identified five preferred locations within its service territory which are described in the following section.

Location 1 – Hickling Substation Area - Elmira

This 115 /34.5 kV two transformer substation serves primarily sub-transmission circuits providing electricity needs to a mix of residential and commercial customers. Hickling Substation is located off of Route 352, near the intersection with U.S. 17 (exit 48) in East Corning. The size of the project may be up to 19.9 MW, and the proposed project may investigate Points of Interconnection at Hickling or nearby 34.5 kV substations.



2025 Bulk Power Energy Storage Request for Proposals

Location 2 - Kiamesha Substation Area - Liberty

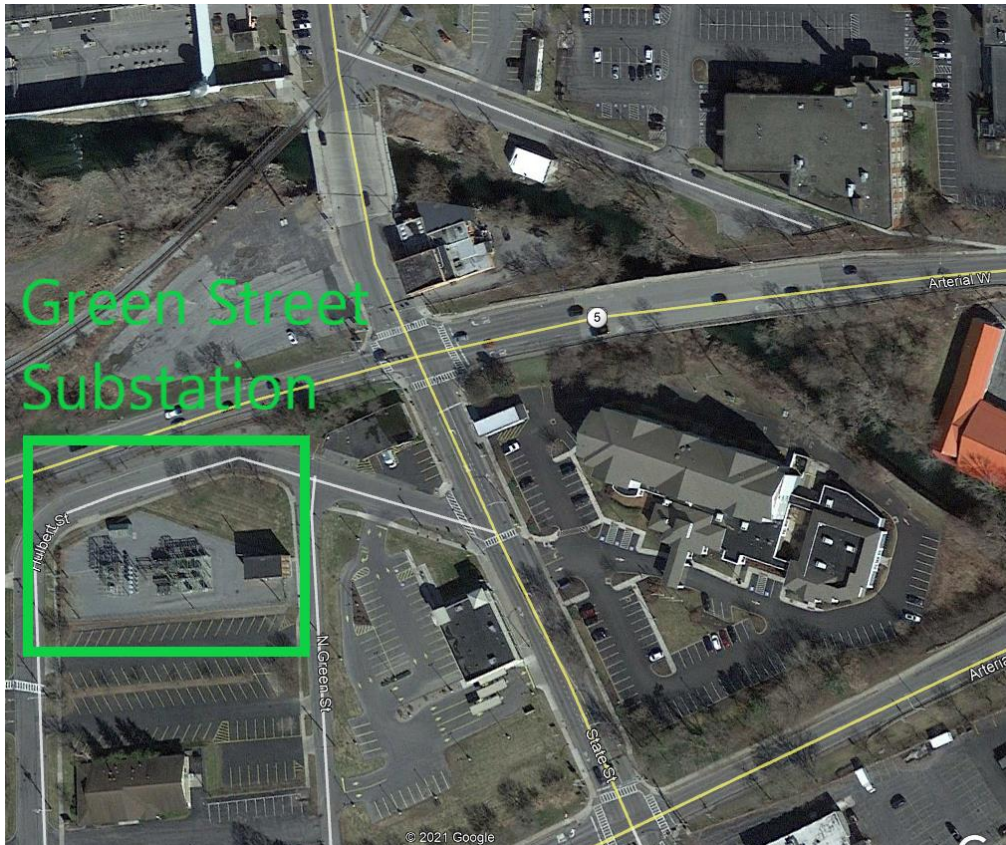
This 34.5 / 12.5 kV single transformer substation is in the center of the sub-transmission network bounded by Coopers Corners, Ferndale and West Woodbourne substations. Kiamesha Substation is located off Route #42, Northeast of the Village of Monticello. The size of the project may be up to 15 MW, and the proposed project may investigate points of interconnection at Kiamesha or nearby 34.5 kV substations.



2025 Bulk Power Energy Storage Request for Proposals

Location 3 – Green Street Substation Area - Auburn

This 34.5 / 4.16 kV two transformer substation is in the center of the sub-transmission network between Wright Ave and State St substations. Green Street Substation is located in the city of Auburn to the southwest of the intersection of State Street and Arterial W. The size of the project may be up to 10 MW.



2025 Bulk Power Energy Storage Request for Proposals

Location 4 – Langdon Substation Area – Binghamton

This 115 /34.5 kV two transformer substation serves primarily sub-transmission circuits providing electricity needs to a mix of residential and commercial customers. Green Street Substation is located on Route 11 near Five Mile Point, in the Town of Kirkwood, southeast of the city of Binghamton. The size of the project may be up to 20 MW, and the proposed project may investigate points of interconnection at Langdon or nearby 34.5 kV substations.



Location 5 – Richfield Springs Substation Area – Oneonta

This 115 / 46 kV two transformer substation serves sub-transmission and distribution circuits to a mix of residential and commercial customers. Richfield Springs Substation is off Lake Street in the town of Richfield Springs. The project size may be up to 20 MW. The proposed project may investigate points of interconnection to the Richfield Springs 115 kV bus or the nearby 115 kV network. A point of interconnection the 46 kV network may require significant local upgrades to support.

2025 Bulk Power Energy Storage Request for Proposals



2025 Bulk Power Energy Storage Request for Proposals

Preferred RG&E Locations

RG&E has identified four preferred locations within its service territory which are described in the following section.

Location 1 – Station 48 Area

This 115 / 34.5 kV and 115 / 11.5 kV four transformer substation serves sub-transmission circuits providing electricity needs to a mix of residential and commercial customers. Station 48 is located at 853 Lexington Avenue, Rochester NY. The size of the project may be up to 20 MW, and the proposed project may investigate points of interconnection at Station 48 or nearby 34.5 kV substations.



2025 Bulk Power Energy Storage Request for Proposals

Location 2 – Station 168

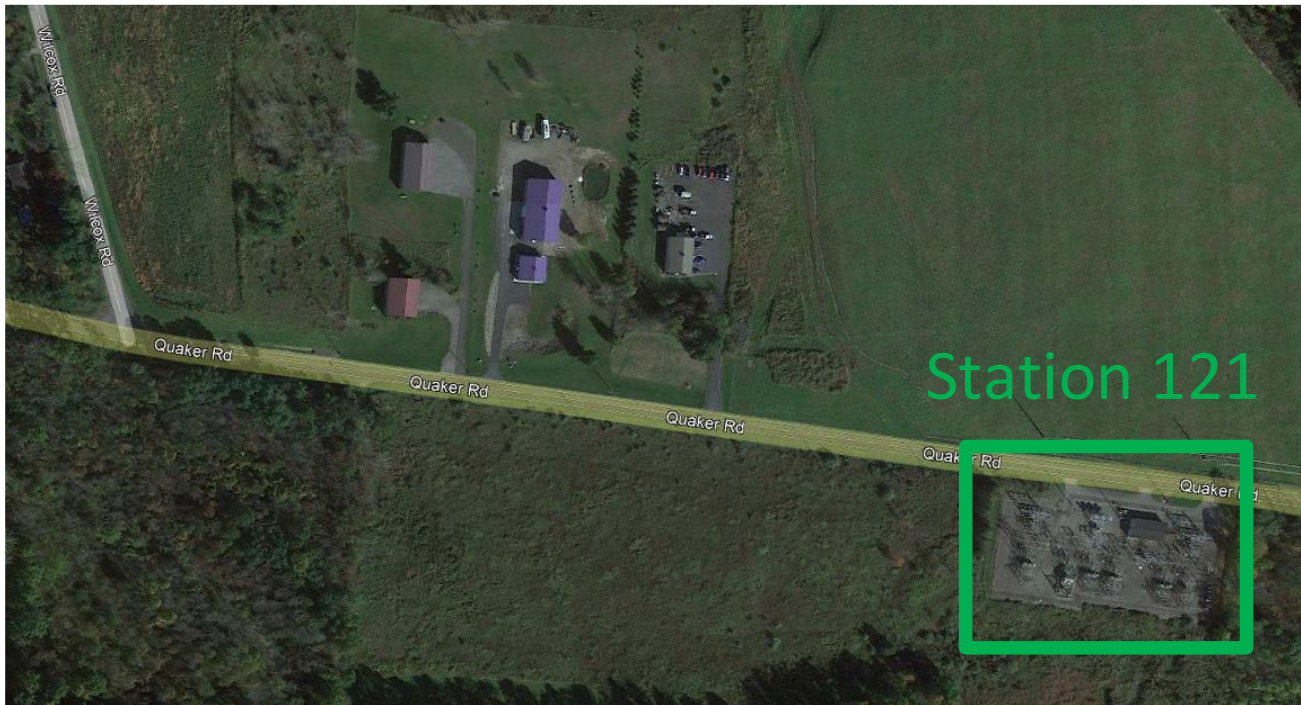
This 115 /34.5 kV and 115 / 12 kV three transformer substation serves sub-transmission and distribution circuits, providing electricity to a mix of residential and commercial customers. Station 168 is located at 4400 State St, Manchester NY. The size of the project may be up to 20 MW.



2025 Bulk Power Energy Storage Request for Proposals

Location 3 – Station 121

This 115 / 34.5 kV one transformer substation serves sub-transmission that provides electricity to a mix of residential and commercial customers. Station 121 is located off Quaker Road in Macedon, NY. The size of the project may be up to 20 MW. The project may consider points of interconnect at the Station 121 115 kV bus or the nearby 115 kV transmission network.



2025 Bulk Power Energy Storage Request for Proposals

Location 4 – Station 7

This 115/34.5 kV four transformer substation serves sub-transmission that provides electricity to a mix of residential and commercial customers. Station 7 is located at 1101 Beach Avenue in the town of Greece, NY. The size of the project may be up to 20 MW.

