

# Russell Station – Former Site





# Russell Station – View from South





# Russell Station – View from West





# Russell Station – Current Site





# Russell Station – Current Condition

---



- Built in late 1940s to early 1950s.
- Last generation occurred in 2008.
- Asbestos insulation and lead paint scattered throughout plant.
- Currently collecting and treating leachate from the former coal pile site - then discharging it into County sewer system.
- Decommissioning actions:
  - Removed boiler water, oil, lubricants, chemicals, fly ash and bottom ash in 2008.
  - Removed and stabilized some asbestos containing material.



# **Russell Station – Demolition Elements**

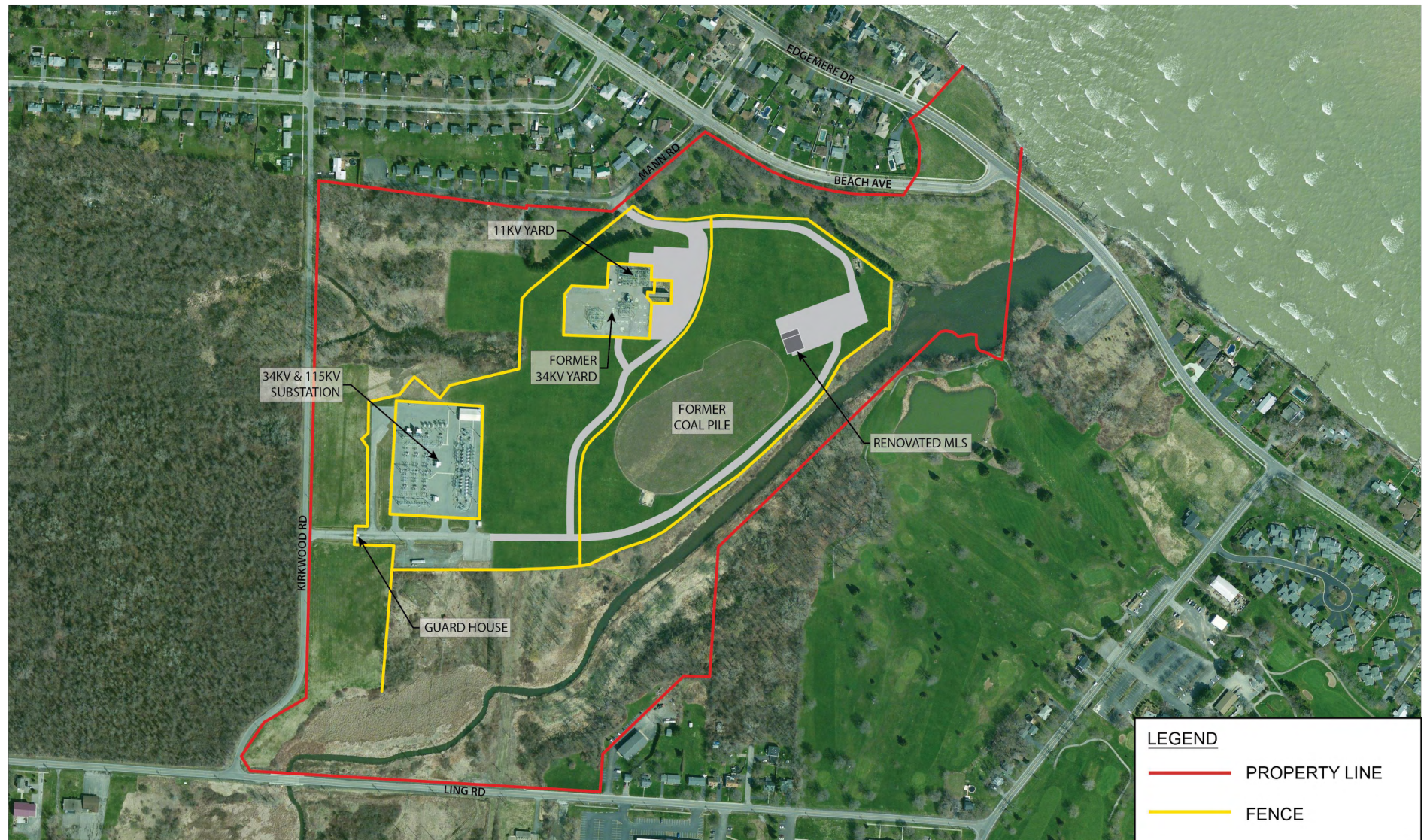
---



- Protect health and safety of public and workers.
- Remove asbestos, hazardous materials and demolition debris.
- Decontaminate all equipment, building surfaces, pits and sumps.
- Remove main plant buildings and structures to approximately three feet below final grade.
- Address other contamination if found.
- Fill landward side of intake tunnel; seal off lakeward side of intake tunnel (buried under lake bottom).
- Manage truck traffic and haul routes.
- Continue to secure/protect operating assets at all times.

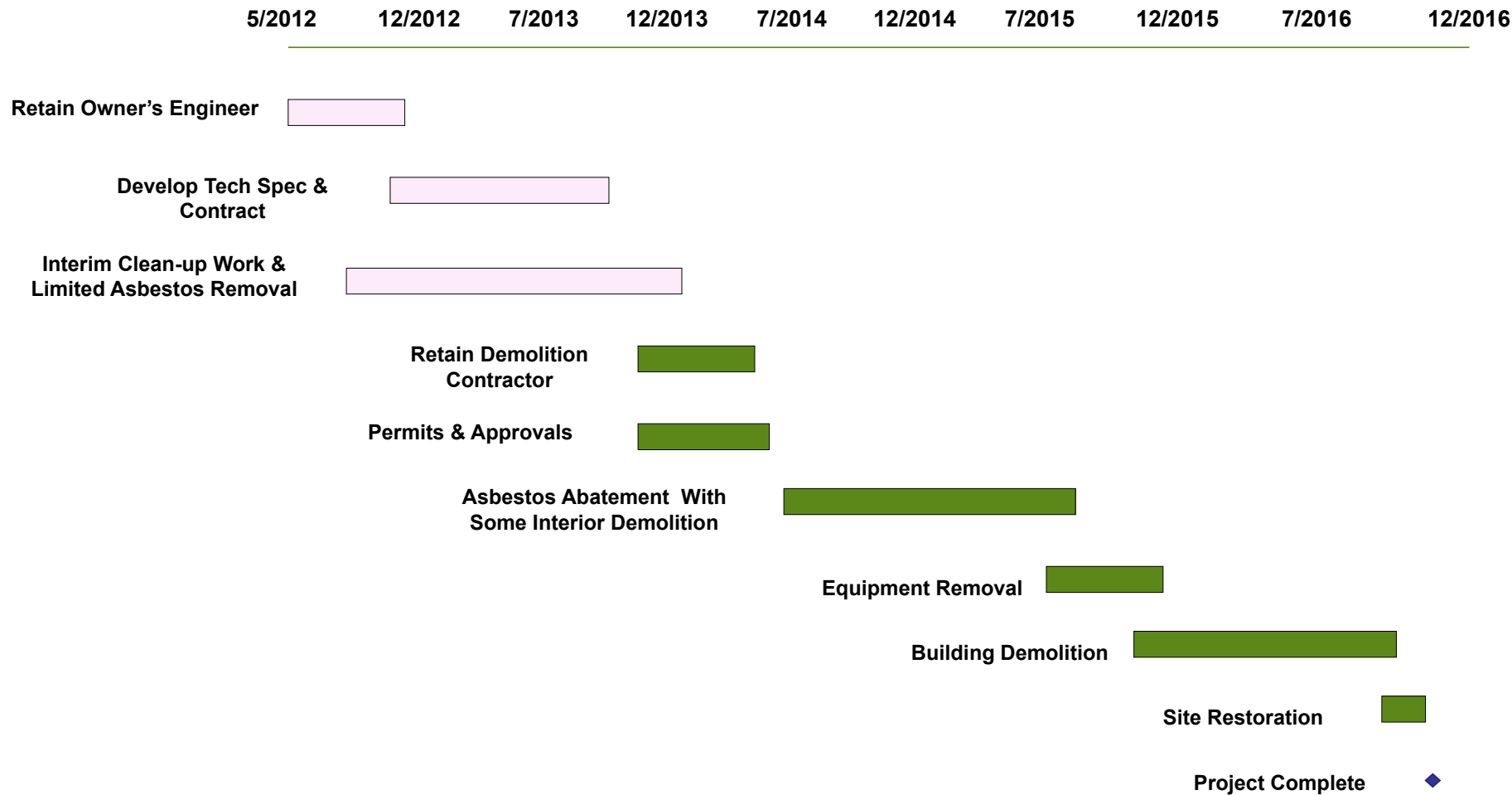


# Russell Station – End State Concept



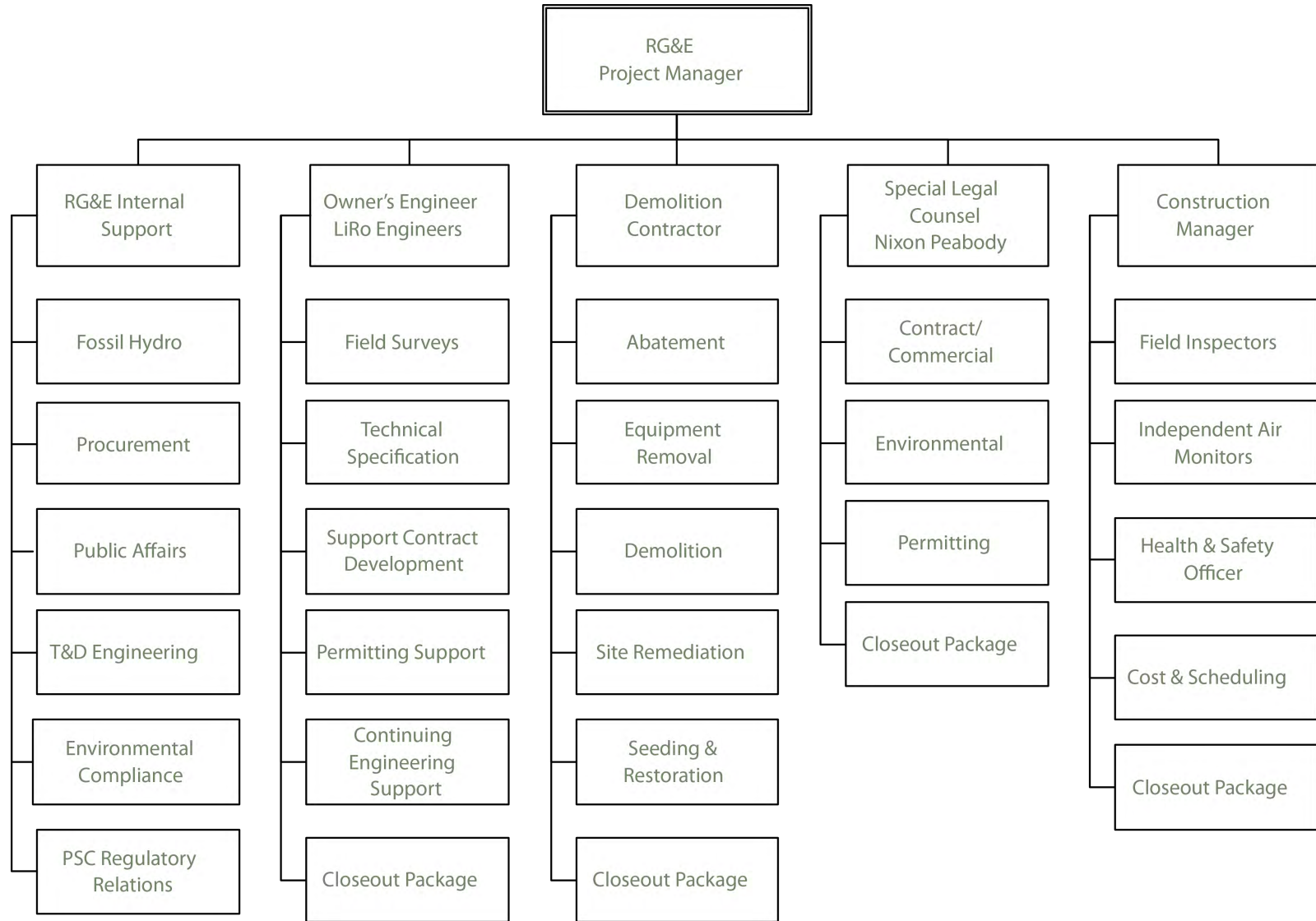


# Russell Station – Demolition Schedule





# Russell Station – Project Organization





# Russell Station – Permit Process



Agency	RG&E Lead	Contractor Lead
Town	State Environmental Quality Review	
Town	Demolition Permit (and Sub-Permits)	
NYSDEC	SPDES, Wetland*, Protection of Coal Pile Leachate Collection & Treatment, Tank Removal Registrations	SWPPP, Stream Protection*
NYSDOS	Coastal Zone Consistency*	
NYSDOL		Asbestos Large Project Notification
USCG, NOAA, FAA		Stack Demolition Notifications

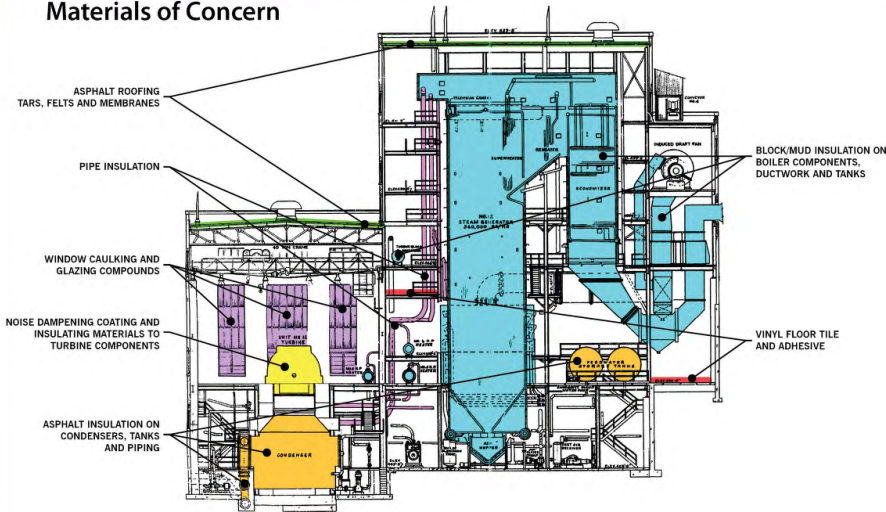
\* If needed, based on contractor work plans



# Asbestos Abatement Phase

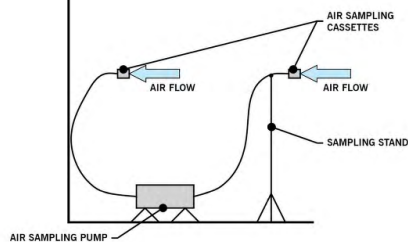
## ABATEMENT SCOPE

### Materials of Concern



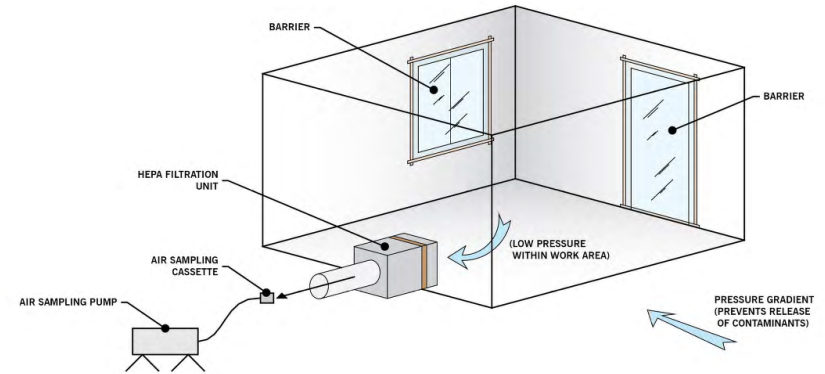
## AIR SAMPLING

- Within Work Area
- Outside Work Area
- Worker Exposure

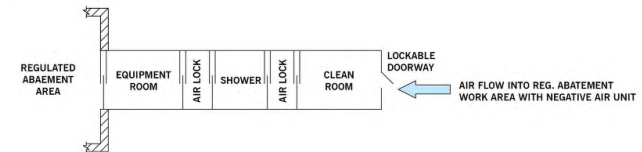


## ENGINEERING CONTROLS AND REMOVAL PROCEDURES

### Contaminated Work Area with Negative Air Unit



### Decontamination Unit



## PROJECT REGULATORY COMPLIANCE

New York State Department of Labor

United States Environmental Protection Agency

Occupational Safety and Health Administration

New York State Department of Environmental Conservation  
(Waste Disposal)

# Asbestos Abatement Phase

Equipment: scrubbers, precipitators, motors gaskets, etc.

Boilers

Flues and Breaching

Wiring

TSI on Piping and Equipment

Roofing

Waterproofing/Vapor Barrier

Miscellaneous Materials  
(Floor tile, drywall, etc.)



GLOVEBAG SYSTEM FOR PIPE TSI REMOVAL



WORK AREA PREPARATION



TRUCK LINING WITH POLY



TRUCK LINING WITH POLY



POLY LINED TRUCK FOR ACM TRANSPORTATION



# Building & Equipment Decontamination



## Industrial Cleaning

Ash Removal and Disposal

Petroleum/PCB Impacted Concrete

Sewers, Drains, Pits, Sumps

Deteriorated Lead Paint Removal

Equipment Cleaning

Stack and Refractory Cleaning



ASH REMOVAL WITH HEPA VAC SYSTEM



ASH REMOVAL WITH HEPA VAC SYSTEM



COLLECTION OF WASH WATER



COLLECTION OF WASH WATER



WASHING OF BUILDING INTERIOR



# Demolition Procedures

## What to Expect

Cranes  
Large Equipment  
High Reach Equipment  
Rigging and Hoisting  
Utility Work  
Sidewalk & Some  
Temporary Street Closures



RIGGING AND HOISTING



HIGH REACH EQUIPMENT



SIDEWALK CLOSURE



LARGE EXCAVATOR WITH SHEARS



LARGE EXCAVATOR WITH GRAPPLER



# Demolition Controls

## CONTROLS

- Health and Safety
- Dust Suppression
- Dust and Air Monitoring
- Vibration Monitoring
- Project Perimeter and Fence
- Communication with Neighbors



PERIMETER FENCE



AIR MONITORING



DUST SUPPRESSION



DUST SUPPRESSION



VIBRATION MONITORING

# Staging Areas & Haul Routes



## Information

The contractor shall limit all entry/egress to/from the project to the Kirkwood Road gate. Access to Kirkwood Road shall be from Ling road only. The contractor shall be restricted from using the Mann Road gate.

Pursuant to title 9 of the New York codes, rules, and regulations, commercial traffic is prohibited in all instances on the Lake Ontario State Parkway and all other parkways in the State of New York.

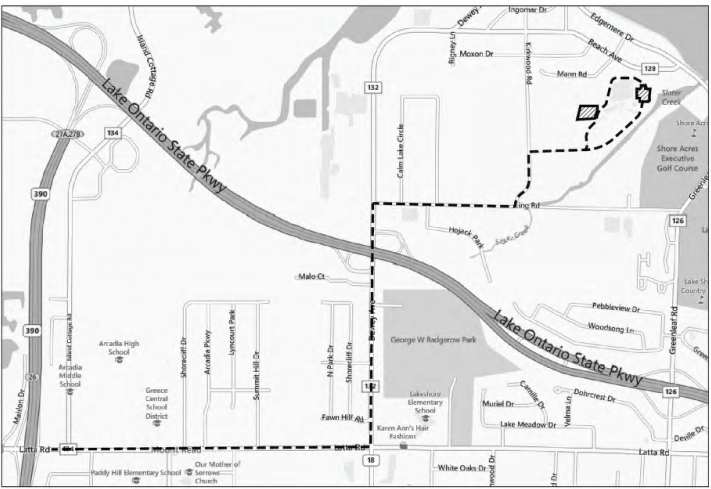
All project related traffic traveling to or from the project shall be prohibited from driving through the nearby residential areas which includes the following streets: Beach Avenue, Moxon Drive, Edgemere Drive, Mann Road. The contractor shall be allowed limited access on Edgemere Drive and Beach Avenue during intake line abandonment. The contractor shall submit a traffic and haul route plan for review of the construction manager. The Contractors Traffic and Haul Route plan shall include identification of important community activities (i.e. schools, hospitals, event venues, etc.) and a discussion of potential conflicts and mitigation measures for Contractor related vehicle traffic during high volume activities (i.e. school start and release times, etc.) at those locations. The Contractors vehicle traffic shall be coordinated such that impacts to important community activities are minimized

The contractor shall be responsible for the repair of any damage to adjacent town and county roadways resulting from the contractor's activity. Repair work shall be made to a condition equal to or better than that which existed prior to construction.

The Contractor shall be required to install a truck scale system to monitor truck weights to verify the trucks do not exceed City and County maximum road weights. The scale system shall include a weight receipt and meet New York State weights and measures requirements. Weight receipts shall be provided as part of the Contractor's daily report submission.

To prevent the migration of any material or residue to the surrounding roadways the contractor shall provide a vehicle wash down area to wash and clean the wheels and body of each truck to remove any material or residue prior to leaving the site.

## Haul Route



## Staging Areas

