



# Russell Station Demolition and Remediation

February 20, 2014



# Agenda

- Introductions
- Site background
- Demolition project details
  - Schedules
  - End state
  - Means and methods
- Emergency, security and environmental
- Permitting

# Russell Current Site Plan



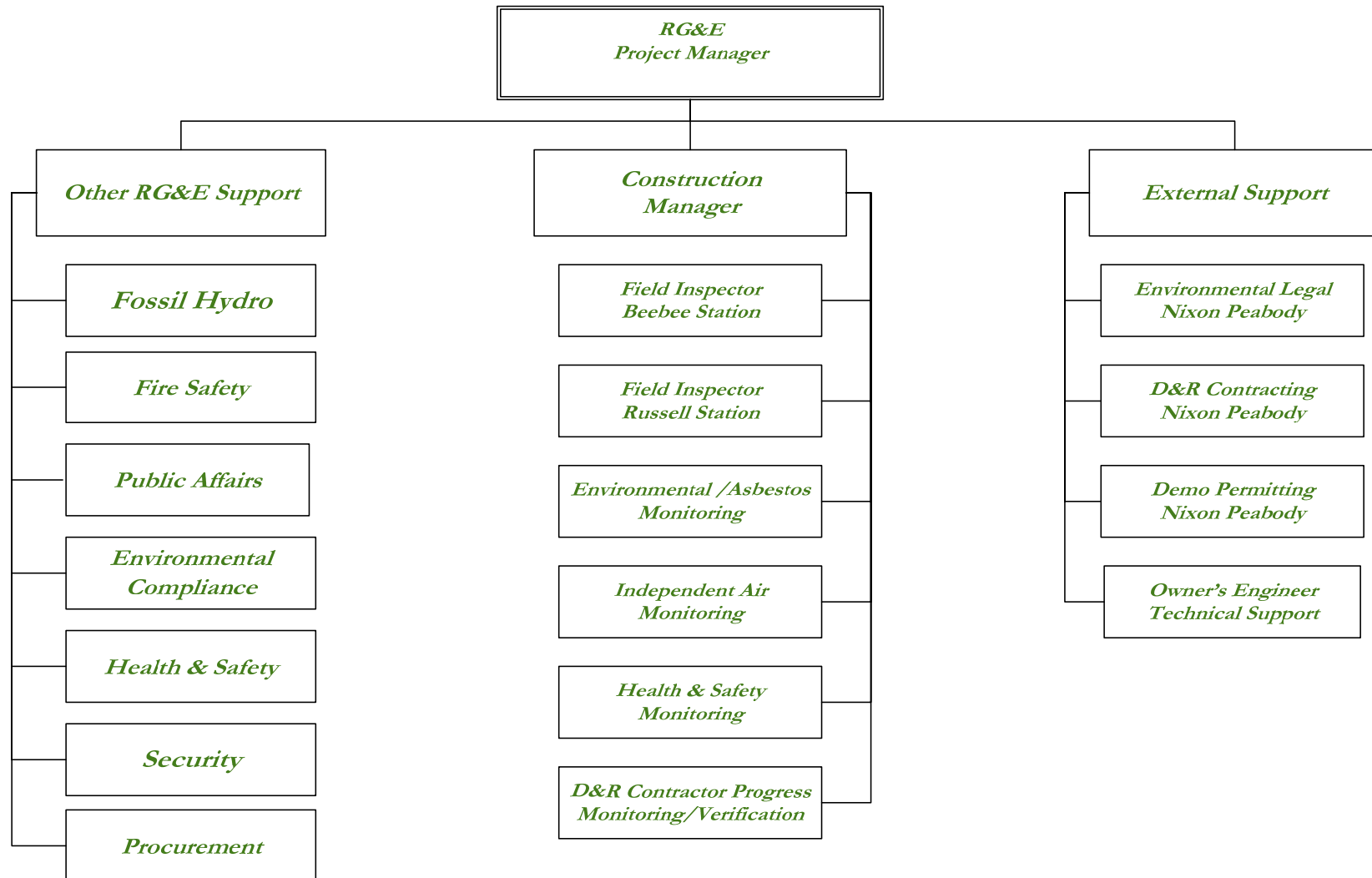
# Russell Background/Condition

- Built in late 1940s to early 1950s
- Last generation in 2008
- Asbestos insulation and lead paint present throughout plant
- Plant continues to collect and treat leachate from the former coal pile, then discharges it to the County sewer system
- Decommissioning actions
  - boiler water, oil, lubricants, chemicals, fly ash and bottom ash removed in 2008
  - Minor Asbestos Containing Material stabilization/removal

# Demolition Considerations

- Protect health & safety of public and all workers
- Safely remove all asbestos, hazardous materials and debris
- Mitigate other contamination as necessary
- Maintain site security
- Protect other functioning RG&E assets on site
- Manage truck traffic to mitigate impact on community
- Complete work at least cost to RG&E customers while maintaining public/worker health and safety

# Project Oversight Organization



# Public Outreach

- Maintain open two-way communications with all stakeholders:
  - Nearby residents and business owners
  - State and local officials
  - Media
  - Other interested groups and organizations
- Build web page ([www.rge.com/russell](http://www.rge.com/russell))
- Establish toll-free number for inquiries
- Engage with media (as needed)
- Hold public information meetings (as necessary)

# Work Completed

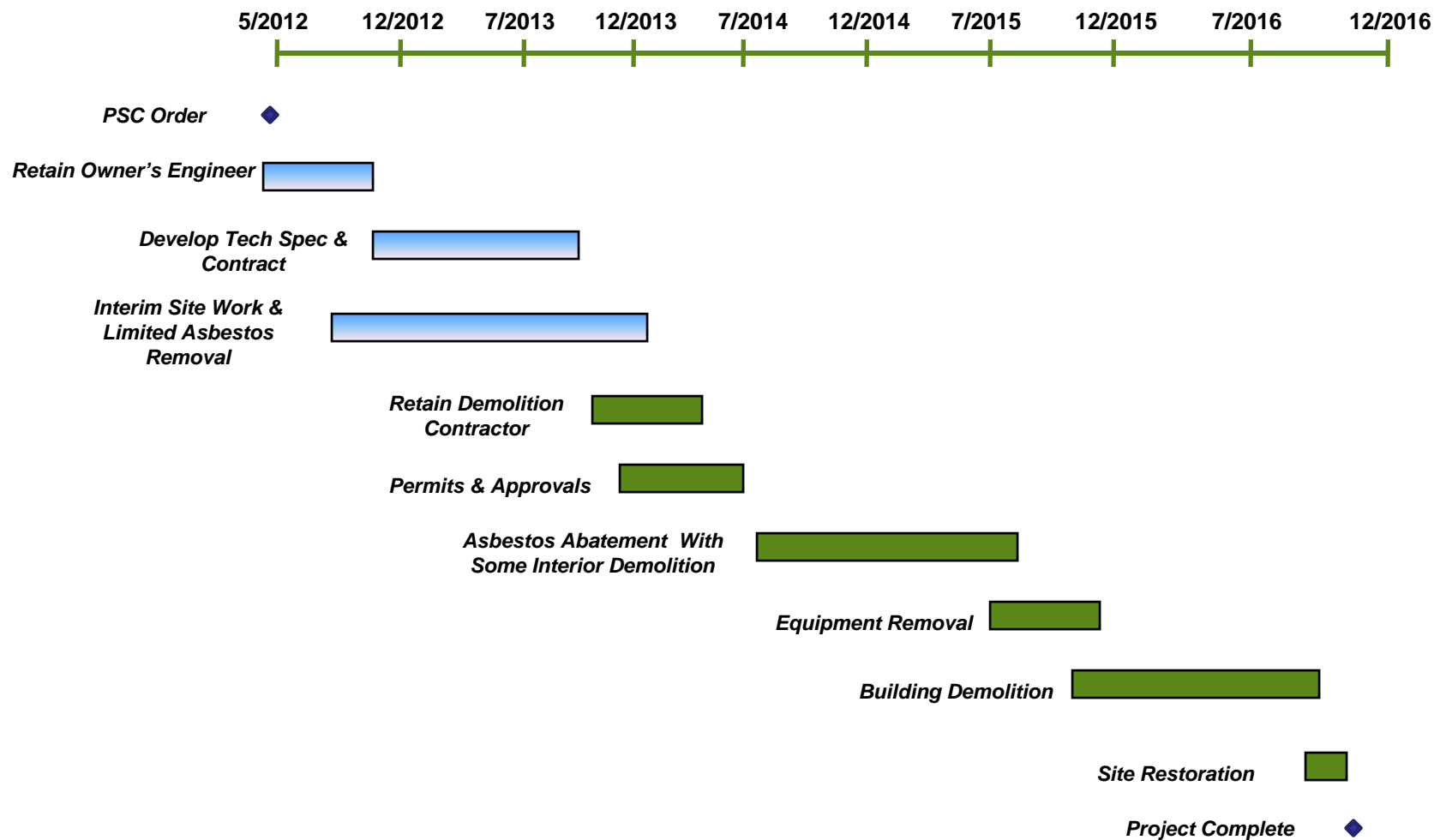
- Site characterization and underground facilities mapping
- Asbestos & hazardous material survey
- Structural integrity assessment
- End state design
- Demolition risk management assessment
- RFP technical specifications & draft contracts
- Cost & schedule estimates
- Draft permit requests information
- Review RFP technical specifications with Town of Greece staff



# Work Underway

- Post D&R SPDES and storm water management plan
- Materials recycling and re-use plan
- Site security and emergency plans
- Community outreach plan

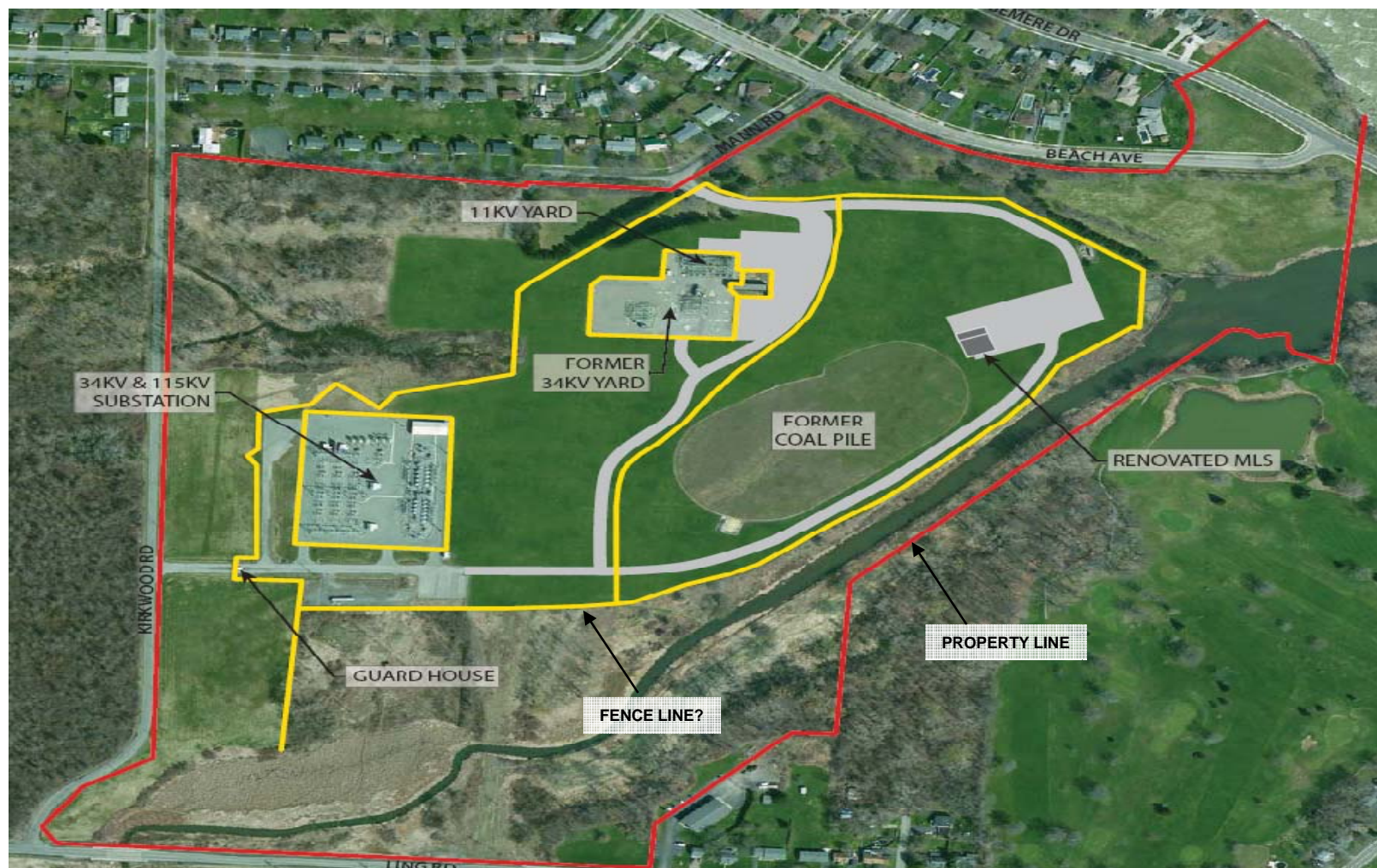
# Anticipated Timeline



# End State Design Parameters

- Clear all buildings & structures to three feet below current grade
- Fill landward side of intake tunnel
- Seal off lakeward side of intake tunnel (buried under lake bottom)
- Maintain perimeter security of site
  - Protect public health and safety
  - Protect RG&E substations
  - Preserve coal pile leachate collection and treatment system
- Remove paved parking areas to the degree possible
- Backfill, cover with topsoil and seed
- Remove railroad structures on property
- Public access to open areas along Mann Road and Beach Ave to remain open and be maintained by RG&E

# End State Concept



# A Multi-phased Project Approach

- Phase I – Contractor selection
  - Requirements and bidding
  - Permits and notifications
  - Mobilization
- Phase II – Structure decontamination
  - Decontaminate, clean and remove
- Phase III – Structure demolition
  - No explosives
  - Controlled deconstruction and dismantlement
  - Crush and clean concrete for reuse
- Phase IV – Site restoration
  - New utilities and drainage
  - Backfill, grade and re-seed
  - New and/or strengthened security perimeter

# Emergency Plans and Site Security

- 24hr on-site security with manned entrance during work hours
- Conduct emergency response coordination meetings
- Install emergency command trailer on site
- Emergency plans in emergency command trailer will show
  - Active work locations
  - Hard wall containment & other building modifications
  - Unsound structural areas
  - Work area entrance/exit points
  - Flammable/combustible storage areas
  - Flammable/hazardous materials quantities and locations
- Additional site security fencing and cameras

# Environmental Protection

- Community air monitoring
- Asbestos abatement air monitoring
- Building decontamination air monitoring
- Vibration and noise monitoring
- Hazardous/flammable materials storage areas
- Storm water/spill pollution prevention & control
- Decontamination/general dewatering collection & treatment
- Transportation plan
  - Truck washing station
  - Truck weigh station

# Permitting and SEQR

Agency	RG&E Lead	Contractor Lead
Town	State Environmental Quality Review	
Town	Demolition Permit (and Sub-Permits)	
NYSDEC	SPDES, Wetland*, Protection of Coal Pile Leachate Collection & Treatment, Tank Removal Registrations	SWPPP, Stream Protection*
NYSDOS	Coastal Zone Consistency*	
NYSDOL		Asbestos Large Project Notification
USCG, NOAA, FAA		Stack Demolition Notifications

\* If needed, based on contractor work plans