

# Beebee Station – Former Site





# Beebee Station – Current Site





# Beebee Station – Current Condition

---



- Plant is out of service and provides no benefit to customers.
- Asbestos-containing material (ACM) and other contaminants such as lead-based paint, fly ash, and coal dust throughout.
- Some ACM stabilization/removal completed.
- 90% of the plant interior accessible only by trained personnel wearing enhanced personal protective equipment.
- Widespread structural deterioration, particularly in older sections.
- Structural and ACM deterioration inside plant will continue.
- Despite improved security, unauthorized entries will continue.

# Beebee Station – Demolition Elements

---



- Protect health and safety of public and workers.
- Remove asbestos, hazardous materials and demolition debris.
- Decontaminate all equipment, building surfaces, pits and sumps.
- Remove main plant buildings and structures to approximately three feet below final grade.
- Address other contamination if found.
- Stabilize gorge wall during demolition and for long term.
- Manage truck traffic and haul routes.
- Maintain security of operating assets before, during and after demolition. (substation, hydro plant, City's Falls lighting buildings)
- Maintain highest levels of health & safety at least cost.

# Beebee Station – End State Design

---



- Reserve area adjacent to substation 137 for future expansion.
- Secure substation 137 & associated underground electric circuits.
- Install protective/architectural fence along Mill St. gorge wall (similar to existing fence).
- Develop open/green space adjacent to Mill St.
- Create observation/overlook at south end of property on Mill St.
- Potential small addition to existing parking.
- Stabilize gorge wall and backfill
- Grade and seed the “flats” area
- Let site return to natural condition.

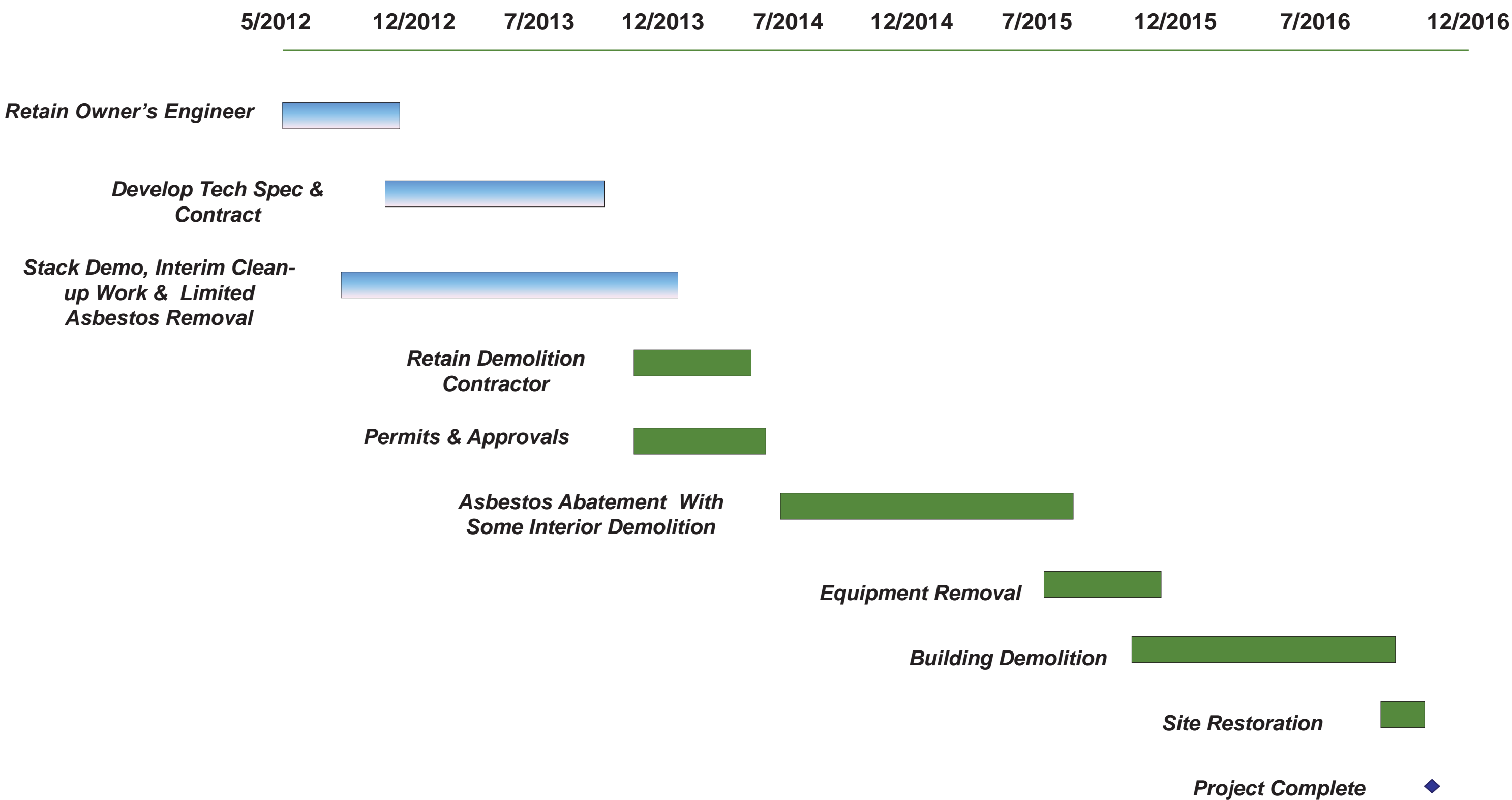


# Beebee Station – End State Concept

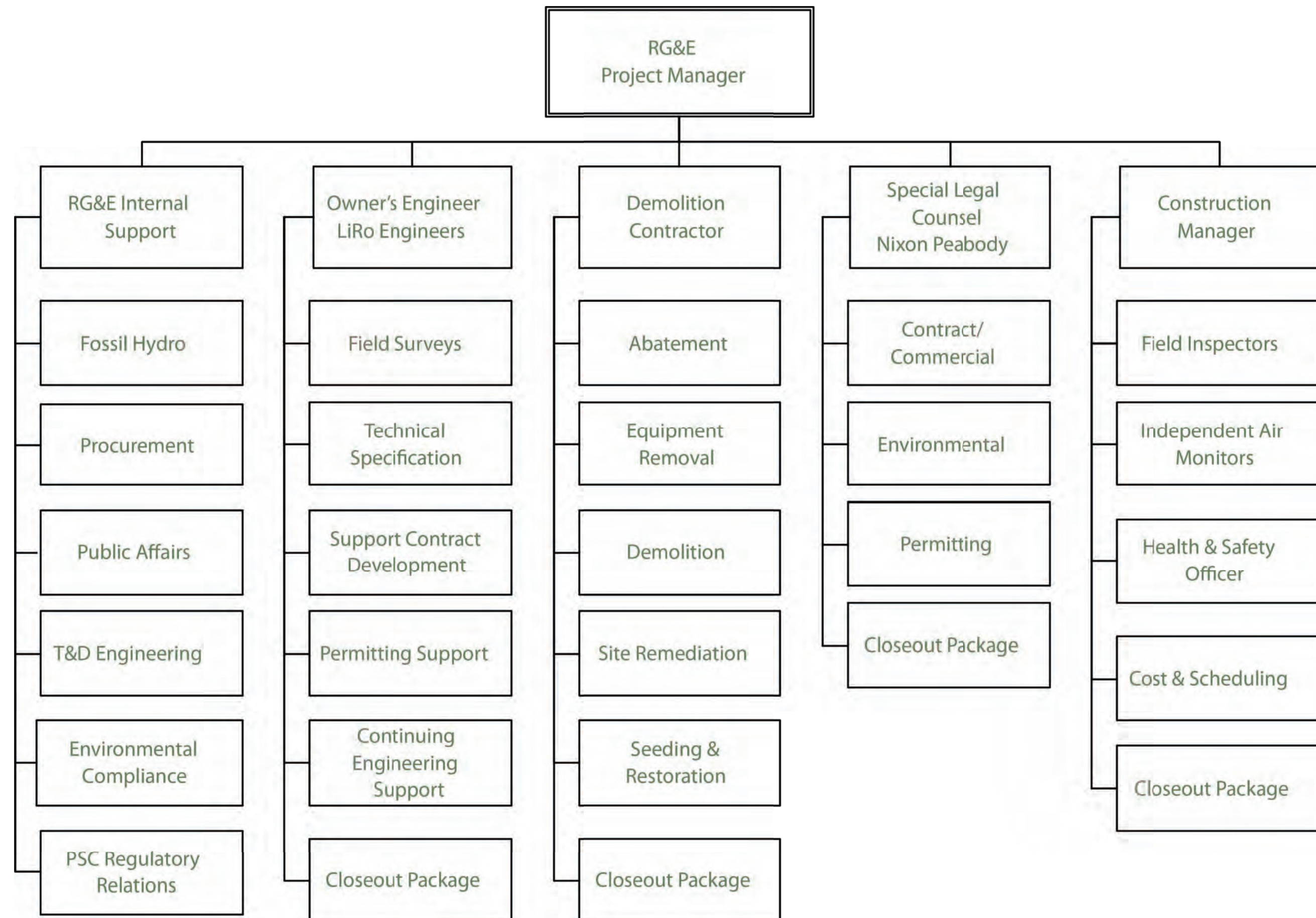




# Beebee Station – Demolition Schedule



# Beebee Station – Project Organization





# Beebee Station – Permit Process



Agency	RG&E Lead	Demolition Contractor Lead
City	Demolition Permit (and sub-permits)	
NYSDEC	SPDES Construction Permit	SPDES - SWPPP
NYSDEC	UST and ABST Tank Removal Registrations	Article 15 Stream Protection
NYSDOL		Asbestos Removal Large Project Notification



# Asbestos Abatement Phase

Equipment: scrubbers, precipitators, motors gaskets, etc.

Boilers

Flues and Breaching

Wiring

TSI on Piping and Equipment

Roofing

Waterproofing/Vapor Barrier

Miscellaneous Materials  
(Floor tile, drywall, etc.)



GLOVEBAG SYSTEM FOR PIPE TSI REMOVAL



WORK AREA PREPARATION



TRUCK LINING WITH POLY



TRUCK LINING WITH POLY



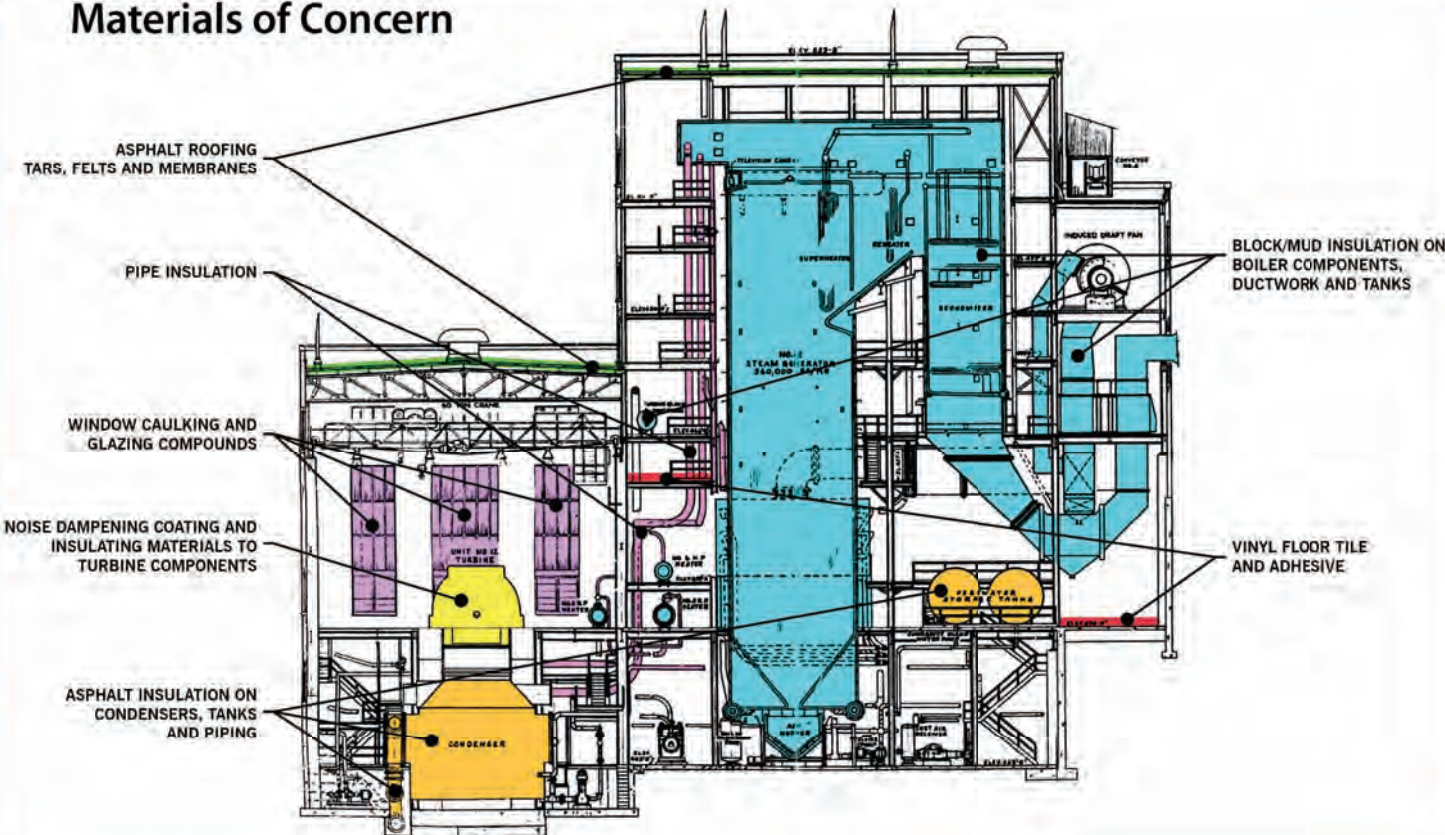
POLY LINED TRUCK FOR ACM TRANSPORTATION



# Asbestos Abatement Phase

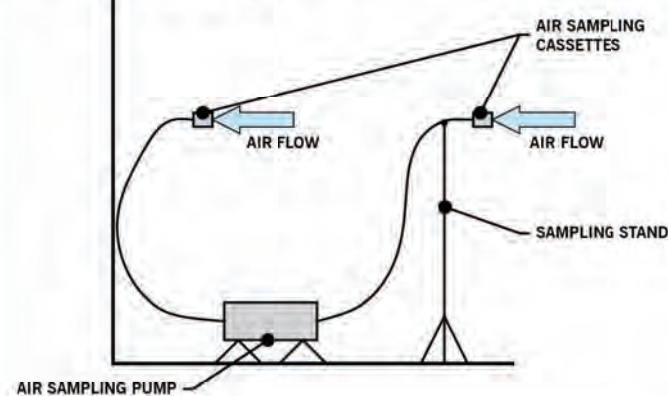
## ABATEMENT SCOPE

### Materials of Concern



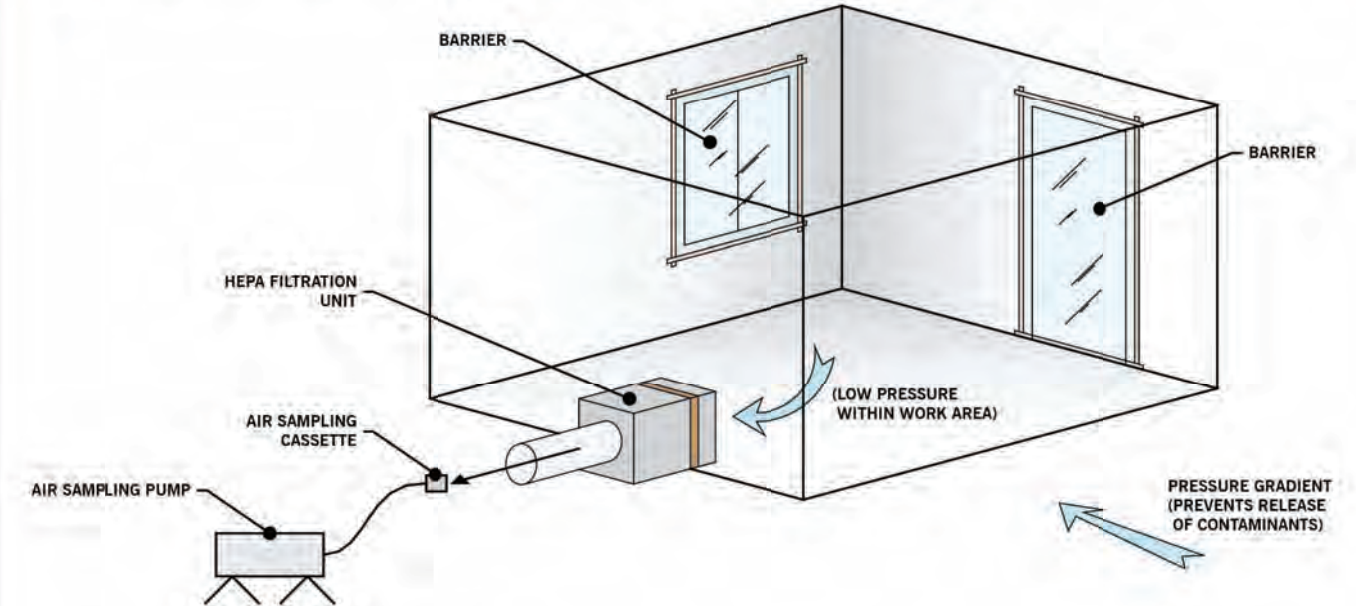
## AIR SAMPLING

- Within Work Area
- Outside Work Area
- Worker Exposure

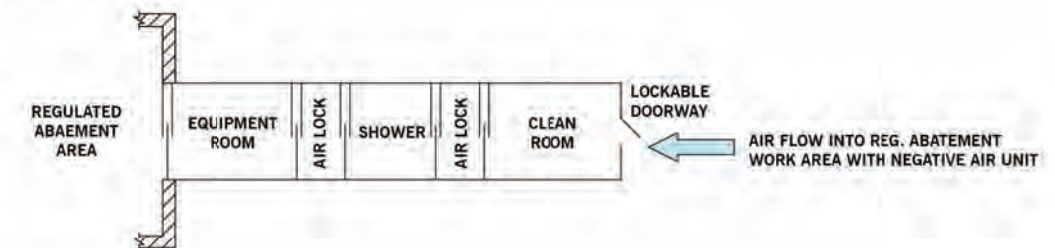


## ENGINEERING CONTROLS AND REMOVAL PROCEDURES

### Contaminated Work Area with Negative Air Unit



### Decontamination Unit



## PROJECT REGULATORY COMPLIANCE

New York State Department of Labor

United States Environmental Protection Agency

Occupational Safety and Health Administration

New York State Department of Environmental Conservation  
(Waste Disposal)



# Building & Equipment Decontamination



## Industrial Cleaning

Ash Removal and Disposal

Petroleum/PCB Impacted Concrete

Sewers, Drains, Pits, Sumps

Deteriorated Lead Paint Removal

Equipment Cleaning

Stack and Refractory Cleaning



ASH REMOVAL WITH HEPA VAC SYSTEM



ASH REMOVAL WITH HEPA VAC SYSTEM



COLLECTION OF WASH WATER



COLLECTION OF WASH WATER



WASHING OF BUILDING INTERIOR



# Demolition Controls

## CONTROLS

- Health and Safety
- Dust Suppression
- Dust and Air Monitoring
- Vibration Monitoring
- Project Perimeter and Fence
- Communication with Neighbors



PERIMETER FENCE



AIR MONITORING



DUST SUPPRESSION



DUST SUPPRESSION



VIBRATION MONITORING



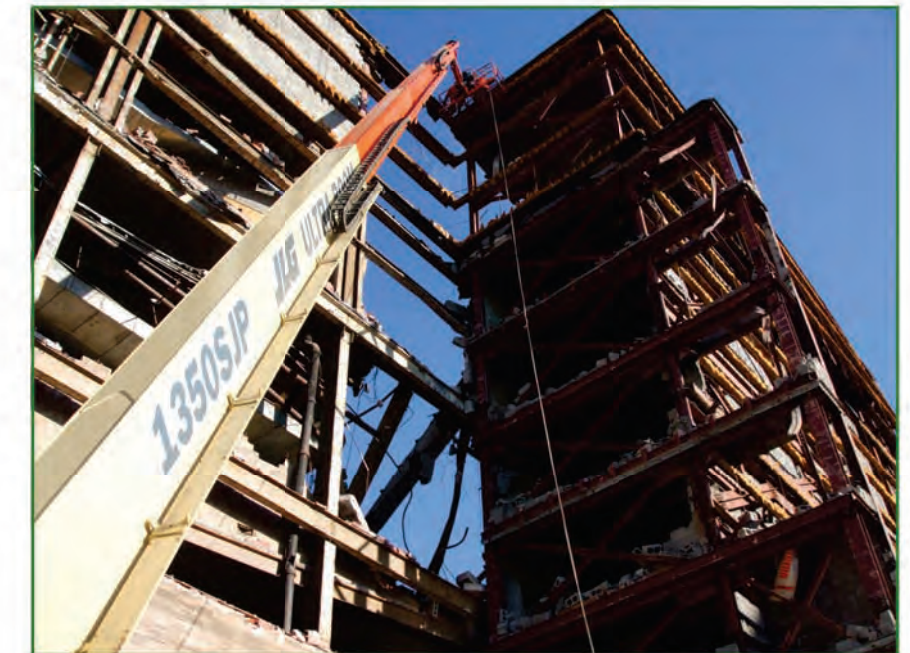
# Demolition Procedures

## What to Expect

Cranes  
Large Equipment  
High Reach Equipment  
Rigging and Hoisting  
Utility Work  
Sidewalk & Some  
Temporary Street Closures



RIGGING AND HOISTING



HIGH REACH EQUIPMENT



SIDEWALK CLOSURE



LARGE EXCAVATOR WITH SHEARS



LARGE EXCAVATOR WITH GRAPPLER



# Staging Areas & Haul Routes

## Information

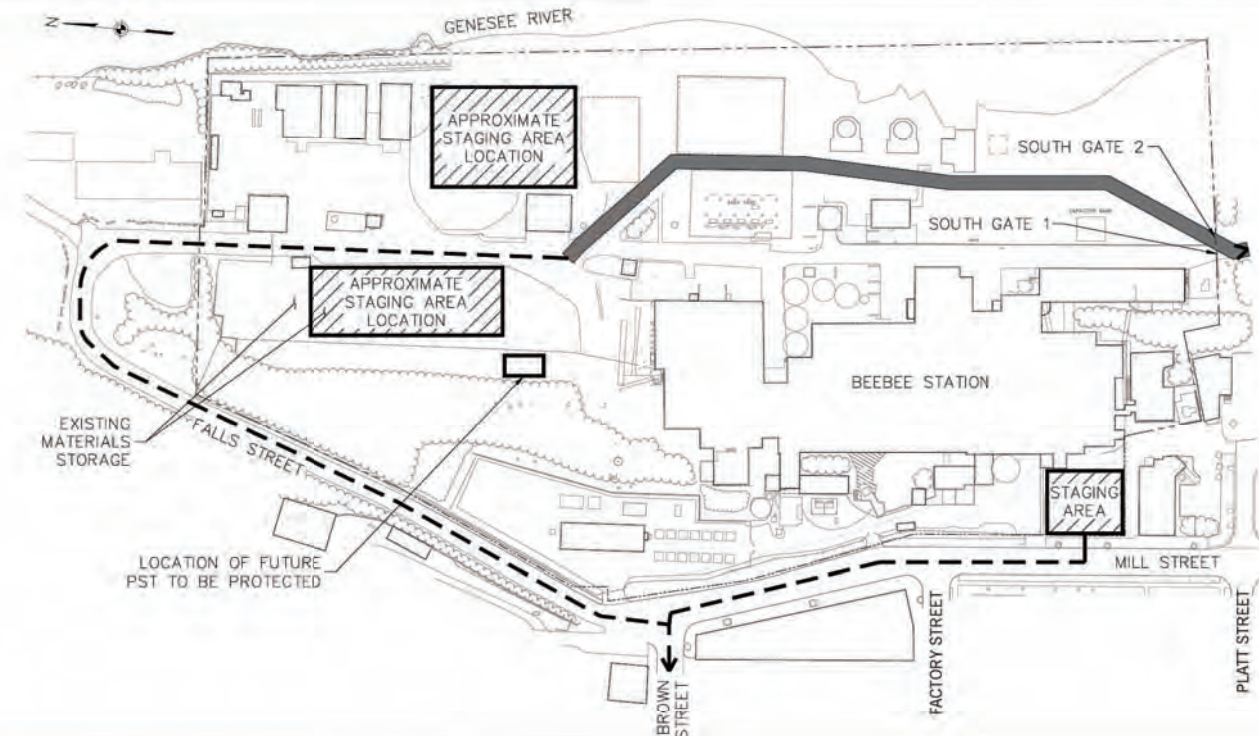
The proposed haul routes are for general guidance of potential City of Rochester requirements for Maintenance and Protection of Traffic. The Contractor shall be responsible for coordinating and obtaining approval from the City for all requirements for traffic control to and from the site.

The Contractor shall be responsible for the repair of any damage to adjacent City roadways resulting from the Contractor's activity. Repair work shall be made to a condition equal to or better than that which existed prior to construction.

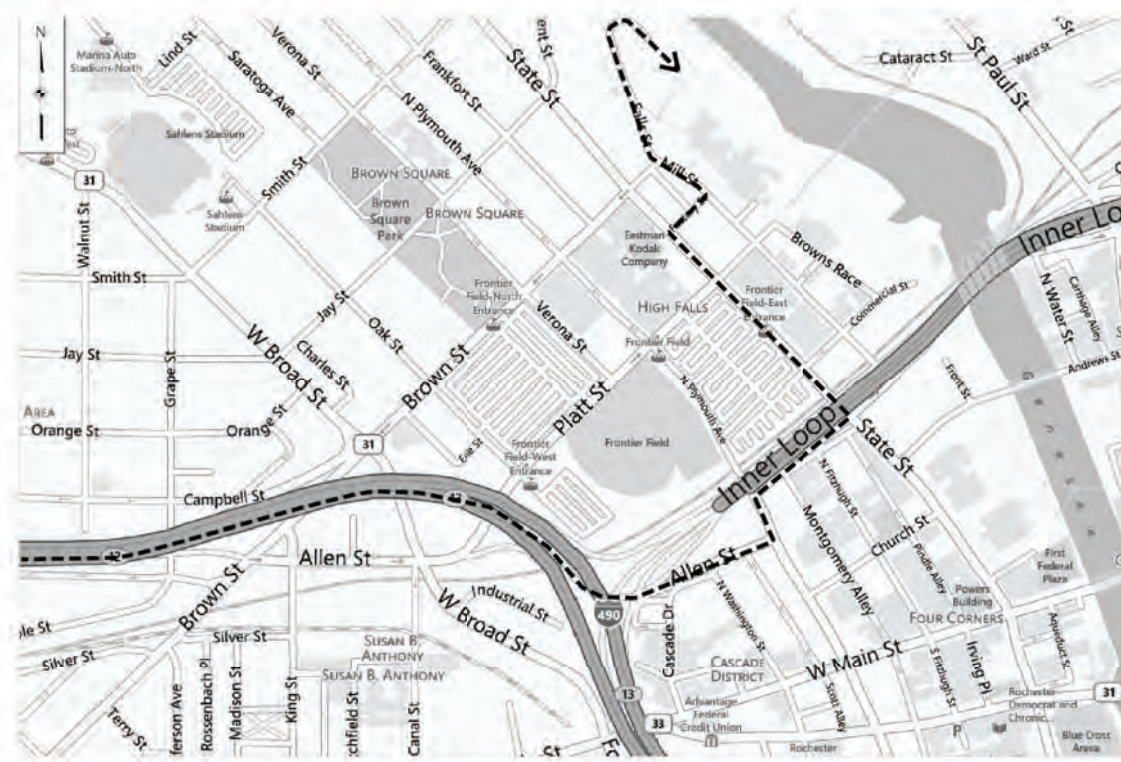
The Contractor shall be required to install a truck scale system to monitor truck weights to verify the trucks do not exceed City and County maximum road weights. The scale system shall include a weight receipt and meet New York State weights and measures requirements. Weight receipts shall be provided as part of the Contractor's daily report submission.

To prevent the migration of any material or residue to the surrounding roadways the contractor shall provide a vehicle wash down area to wash and clean the wheels and body of each truck to remove any material or residue prior to leaving the site.

## Staging Areas



## Haul Routes - In



## Haul Routes - Out

