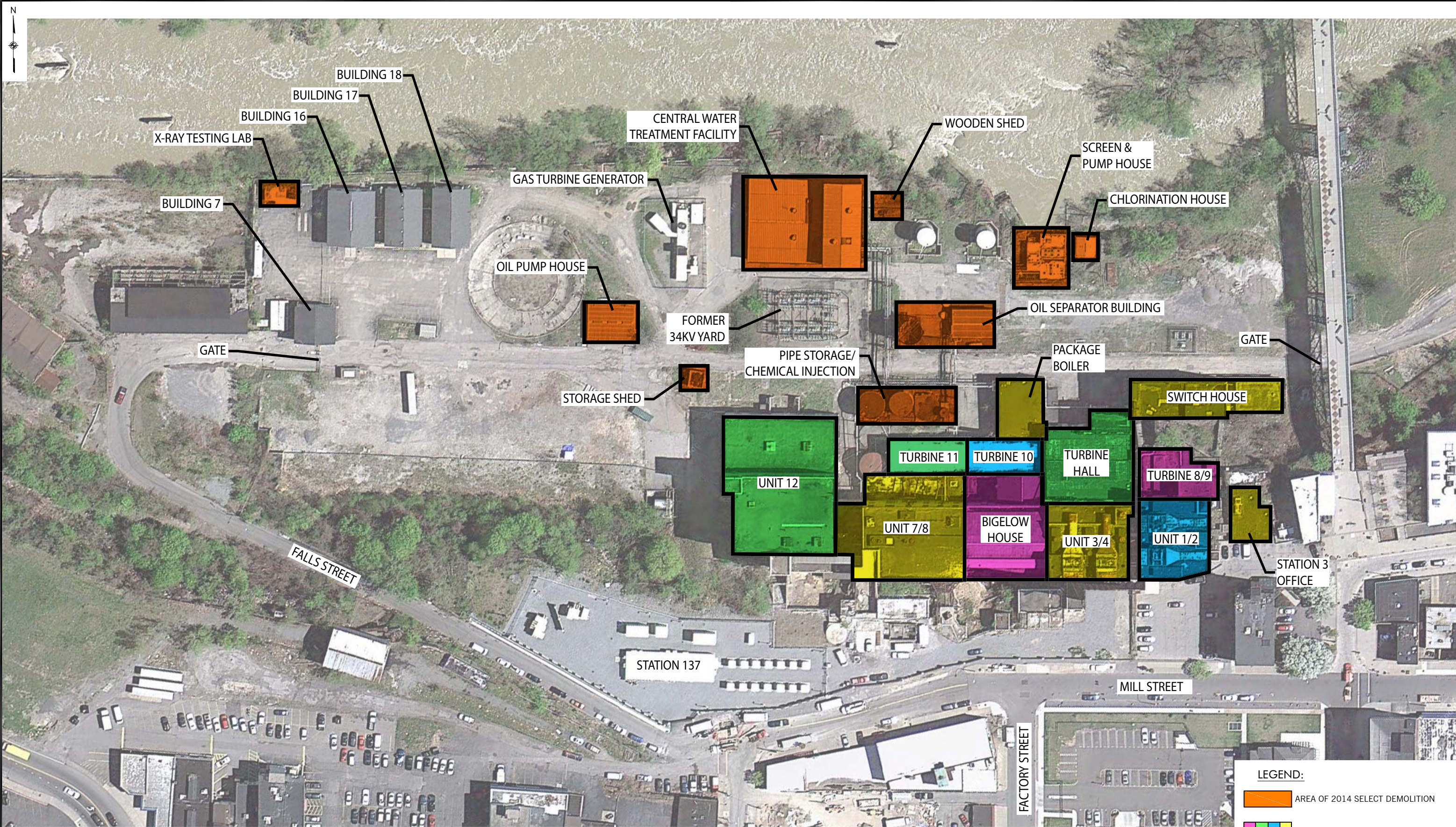




J:\12-126-0881 Beebe Station\CAD\BEEBEE BUILDING ID PLAN.DWG



<div>WARNING</div> <div>IT IS A VIOLATION OF SECTION 7209, SUBDIVISION 2, OF THE NEW YORK STATE EDUCATION LAW FOR ANY PERSON, OTHER THAN THOSE WHOSE SEAL APPEARS ON THIS DRAWING, TO ALTER IN ANY WAY AN ITEM ON THIS DRAWING. IF AN ITEM IS ALTERED, THE ALTERING ENGINEER SHALL AFFIX TO THE ITEM HIS SEAL AND THE NOTATION "ALTERED BY" FOLLOWED BY HIS SIGNATURE AND THE DATE OF SUCH ALTERATION, AND A SPECIFIC DESCRIPTION OF THE ALTERATION.</div>				<div></div> <div>LiRo Engineers, Inc. 690 Delaware Ave. Buffalo, New York</div>	PROJ. ENG.: M.J.W.	<div></div> <div>Rochester Gas & Electric</div>			JOB TITLE AND LOCATION: DEMOLITION AND REMEDIATION OF BEEBEE STATION 242 MILL ST, ROCHESTER NY 14614		LIRO JOB NO.: 12-126-0881
	DESIGNED BY: M.J.W.	SHEET 1 OF 1									
	CHECKED BY: R.F.K.										
		NO.	DATE		DESCRIPTION		DRAWN BY: A.M.K.	DATE: DECEMBER 2013	SCALE: NONE	DRAWING TITLE: BUILDING AREA IDENTIFICATION PLAN	
	REVISIONS										