

CONTACT

Project Information Line: **888.553.5411**

Refer to: **Station 210 Transformer Replacement and Modernization Project**

Website: **RG&E > Reliable Service**

Email: **outreach@rge.com**

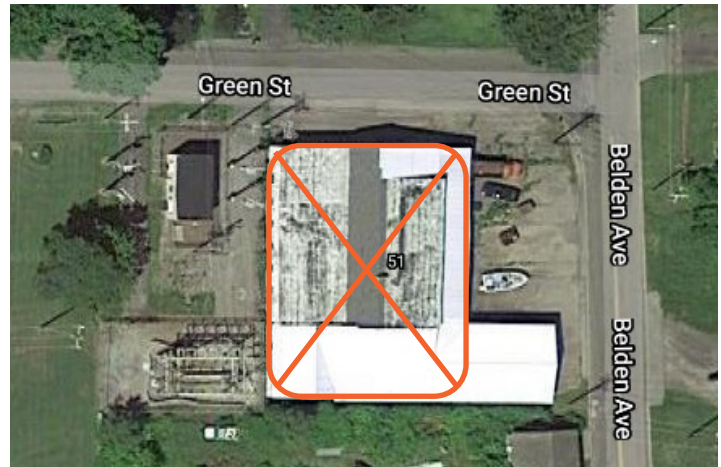
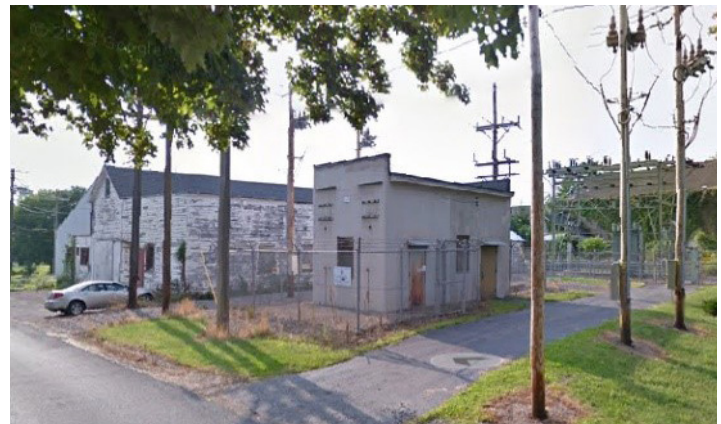
PROJECT OVERVIEW

As part of our commitment to provide safe, reliable service to all our customers, Rochester Gas and Electric Corporation (RG&E), in conjunction with our parent company – AVANGRID, is updating the delivery system in our service areas. These upgrades comply with new electric transmission reliability requirements. While making investments to meet the community's growing energy demands, we are working closely with our neighbors to ensure that all improvements are performed with minimal disruption to the environment and the communities we serve.

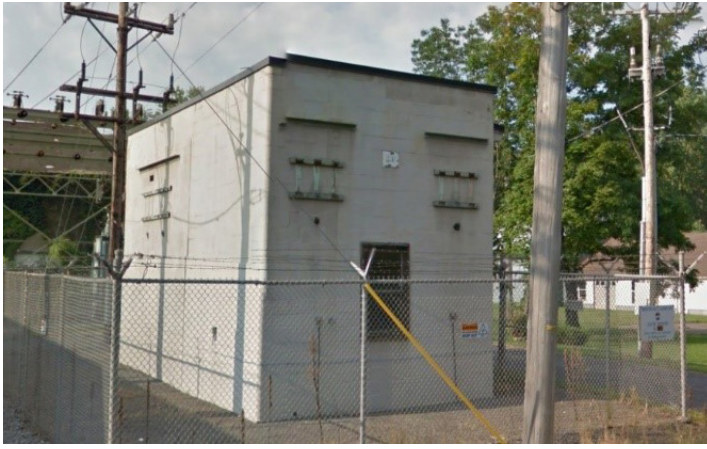
PROJECT PURPOSE AND NEED

To comply with more stringent reliability standards issued by the North American Electric Reliability Corporation (NERC), we are planning an upgrade of certain components of the electric delivery systems in the Village Sodus. Specifically, we will be modernizing Station 210 to increase its capacity, improve its asset conditions, and enhance the reliability requirements of the station for our valued RG&E customers.

This modernization and replacement effort will improve the overall resiliency of the grid while simultaneously upgrading the technological components and improving the appearance of the substation.



Station 210 is located at 210 Green Street in the Village of Sodus. The previously-existing adjacent building at 51 Belden Avenue (center image) was demolished in December 2020, and the original Control House (top image) was removed during the summer of 2020. The recently-cleared location (bottom image) will now be the site of an upgraded Control House with corresponding perimeter fencing. Contingency lighting will also be installed to allow for any urgent afterhours work.



A new Control House will be built (at a different location within the property) featuring upgraded gas-insulated switchgear (GIS) technology and an updated control system. Additionally, a new and more efficient transformer will replace the current outdated version that has been in place since 1966, thereby providing more capacity and resiliency.

STATION 210 MODERNIZATION PROJECT SCOPE INCLUDES

- Construction of a new Control House building containing state-of-the-art gas-insulated switchgear (GIS) technology and an updated control system.
- Installation of new transformer to replace the current outdated transformer (current one was installed in 1966).
- Distribution circuit upgrade: Reconstruct and convert the one of the four existing 4 kV circuits to 12 kV circuits.
- New perimeter fencing will be installed, as will contingency lighting to allow for any urgent afterhours work.
- Upgrade capabilities to continue serving approximately 1,678 residential and commercial customers.

BENEFITS TO THE REGION

- The upgrades will improve the reliability and resiliency of the entire transmission system, ensuring that the safe and reliable distribution of power is maintained.
- The upgraded transformers and Control House will meet the growing demand for additional power in the region.
- The modernization allows the utility to remotely operate in the substations when necessary.

PROJECT FACTS

Municipalities Impacted:	Village of Sodus
County Impacted:	Wayne
Permitting Required:	Local
ESTIMATED TIMETABLE <i>(subject to change)</i>	
Initial Field Work:	Completed
Construction Start:	Q1 2023
In Service Date:	Q3 2024