

## SECTION 11 Mobile Homes

### 11 – 1 General

The requirements for electric service and meters for mobile homes receive special consideration, in addition to applicable requirements in Section 4. Refer to Single-Phase Meter Box section.

### 11 – 2 Service

#### 11 – 2a Customer/Contractor

- Consult with the company regarding each installation and consult with the company regarding the acceptable types of equipment.
- Ensure that the service entrance conductor has a minimum current rating of 100 amperes for a single meter position. Installations of two or more meters must have a current rating in accordance with the NEC.
- Provide adequate support for attachment of the service lateral. Do not attach the service lateral or meter directly to mobile homes, under any conditions.

### 11 – 3 Underground

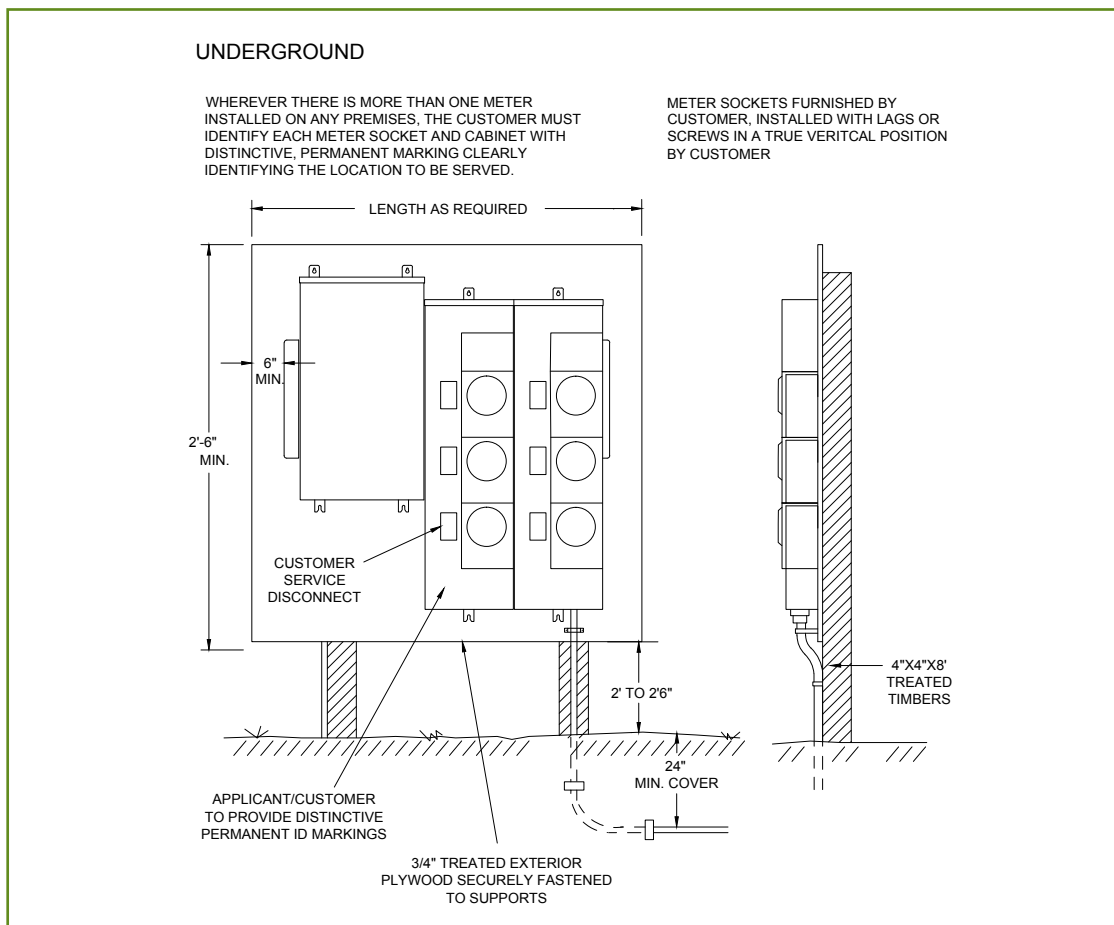


Figure 47

# SECTION 11 Mobile Homes

## 11 - 4 Overhead

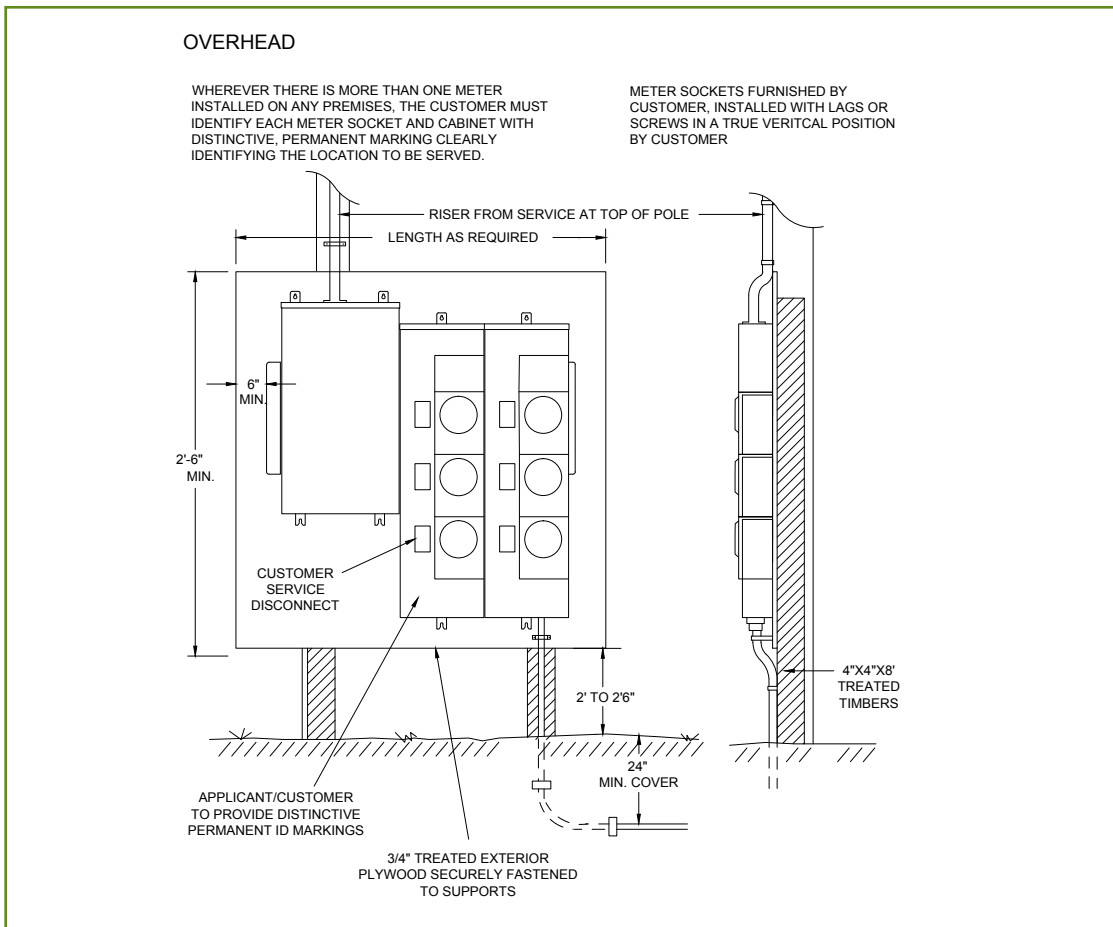


Figure 48